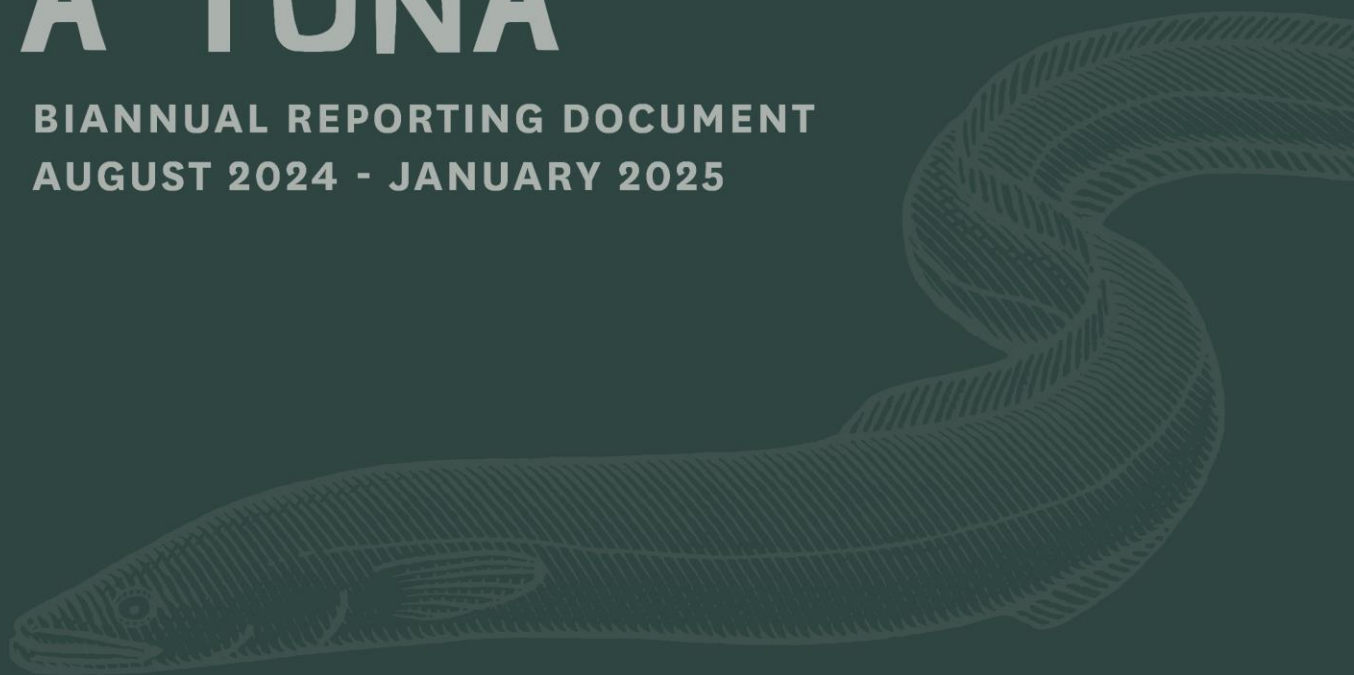




TE TINI A TUNA

BIANNUAL REPORTING DOCUMENT
AUGUST 2024 - JANUARY 2025



A plan of action prepared by Te Maru o Kaituna

Project	Lead Agency	Overall Status	Overall Progress
Project 1 - Lowland Drains and Drainage Canal Improvement	BOPRC	Green	25%
Project 2 – Freshwater Quality and Quantity Limits	BOPRC	Amber	70%
Project 3A, 3C – Consented Takes and Discharges	BOPRC	Green	100%
Project 3B – Consented Takes and Discharges	WBOPDC, RLC, TCC	Green	100%
Project 3D – Consented Takes and Discharges	TMoK	Green	10%
Project 4A – Focus Catchments	BOPRC	Green	45%
Project 4B – Focus Catchments	WBOPDC/TCC	Amber	10%
Project 5 – Farm Environmental Plans	BOPRC	Amber	10%
Project 6 – Post Kaituna River Rediversion Enhancement	BOPRC	Green	70%
Project 7 – Wetland Re-Creation	BOPRC	Green	70%
Project 8A – Kaituna Habitats Network	WBOPDC	Green	100%
Project 8A/8B – Kaituna Habitats Network	BOPRC	Green	100%
Project 8C – Kaituna Habitats Network	BOPRC	Green	10%
Project 8C – Kaituna Habitats Network	TMoK	Green	75%
Project 9 – Pataka Kai	TMoK	Green	80%
Project 10 – Kaituna Community Connection	TMoK	Green	70%
Project 11 – Kaituna River Access	WBOPDC	Green	55%
Project 12 – Kaituna Cycleway/Walkway	WBOPDC	Amber	10%
Project 13 – Kaituna Cultural and Historical Heritage	TMoK	Amber	0%
Project 14 – Upper Catchment ‘Gateway’	RLC	Green	75%
Project 15 – Coastal Park Network	BOPRC	Red	0%
Project 16 – State of the Awa Integrated Monitoring and Reporting	BOPRC	Amber	10%
Project 17 – Kaituna Catchment Network Mapping	BOPRC, WBOPDC	Green	70%
Project 18 – River Restoration and Enhancement Fund	TMoK	Red	0%

Project 1 - Lowland Drains and Drainage Canal Improvement

Output - 1A Lowland Drains Rehabilitation Plan

Project Lead – Jackson Efford

Progress Update

- Best practice drains upgrade work completed on at least **13 properties** since the inception of EPs in the lower Kaituna catchments from 2020. Additional two properties since last update.
- Approximately **19 km of drain upgrades** in the lower Kaituna catchment has been completed with the intention for BOPRC and landowners to carry out more works into future.
- An additional 2 km best practice drains restoration completed on TAML farm in 2024. Monitoring continues on the paired drain experiment, with all battering, fencing, and planting now complete (to be compared/monitored against similar drains with no enhancements applied to determine effectiveness of the treatment). These will be monitored for at least five years. A total of 7.2km of fencing, 4km of drain restoration and 23,000 plants were undertaken to complete the project.
- 700 m best practice drain restoration planned in Parawhenuamea over 2025 winter.
- 1 km battering completed summer 2024/24 ready for fencing and planting winter 2025, lower Kaituna, Kaituna Rd (Ford Rd/Waitepuia sub-catchment).
- Current costs to restore drains to best practice standard remain at around \$20,000-\$40,000/km (includes re-battering drain, new fencing, and native planting). Opportunities exist to help reduce costs.
- Subject to what the Essential Freshwater Policy Programme delivers through Regional Plan Change 19, development of a Lowland Drains Strategy would be useful to help prioritise works areas

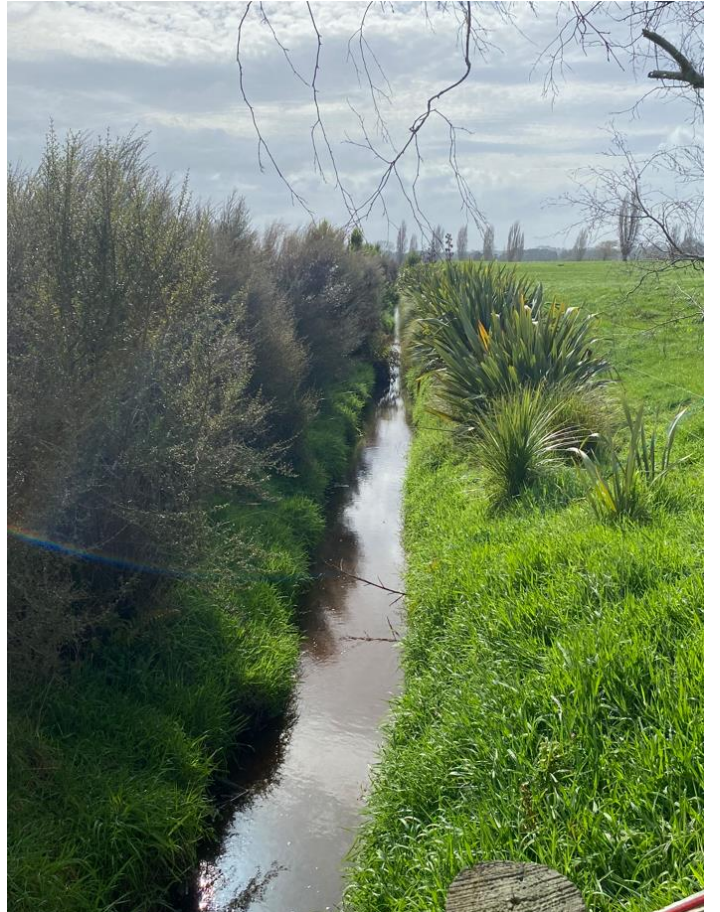
Best Practice Drain Restoration: has been an ongoing mitigation included in many environmental programmes, particularly in the lower Kaituna. Photos below highlight some before and after examples of restoration across multiple properties in the lower Kaituna Catchment.



Example of best practice drain restoration in the lower Kaituna. left) Taken pre intervention 2021. Right) Post planting early 2024.



Example of best practice drain restoration. Left) Taken 2021 soon after planting. Right) Taken August 2024.



Example of best practice drain restoration. Left) Taken 2021 soon after planting. Right) Taken August 2024.



Example of best practice drain restoration. Left) Taken 2021 soon after planting. Right) Taken August 2024.



Additional 2km best practice drain restoration in the lower Kaituna, planted winter 2024.

Project 1 - Lowland Drains and Drainage Canal Improvement

Output - 1B Ford Road Pump Stations Upgrade (relocation)

Project Lead – Kathy Thiel-Lardon (BOPRC)

Progress update

Resource Consents and Archaeological Authority have now been granted for the pump station construction and drain widening works.

The project will be implemented in three main stages as follows:

Stage 1 – Drainage Improvement works – mostly complete.

Stage 2 – Construction of the new pump station – June 2027 (TBC)

Stage 3 – Decommissioning and removal of the existing Ford Road Pump Station – 2030/31

Stage 1 – Drainage improvement works.

The works for for Stage One is almost complete, with minor planting of the shallow water zone yet to be completed. The works involved earthworks associated with the widening of approximately 1.6km of existing network drains (drains known as the Internal Drain and Cruickshank’s Drain), the removal of two existing box culverts and one bridge, the installation of three new bridges and the associated realignment of one farm access track (to accommodate the drain widening). The widening of the drains was undertaken to accommodate riparian planting along both sides.

Riparian Planting



Bridge installation



Stage 2 – Construction of the new pump station

Stage two involves the installing of a new pump station at the Diagonal Drain site adjacent to the existing pump station. The project includes the pump station, pipework, the discharge structure and associated works. The project was originally scoped based on an Axial Pump option; however, the Archimedes pump option was added as it became evident the Axial pump may not meet fish passage guidelines.

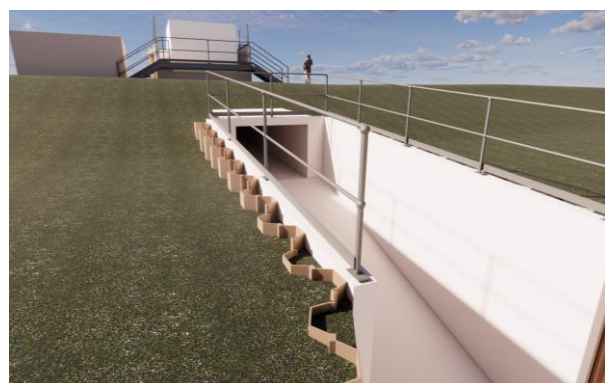
Toi Moana is a partner to the “Pathways to the sea initiative” led by Waikato Regional Council to investigate pumping options to enable safe passage of tuna and other species through Council-run drainage systems and pump stations. Waikato has been trialling the use of Archimedes screw pumps and different impellor types in Axial flow pumps. The most recent fish trial resulted in 99.2% no damage using the Archimedes screw pump compared to 44.8% no damage for the Axial flow pump with the modified impellor. Based on trials, the FishFlow Encased Archimedes screw pump outperforms any other available pump.

Both options were assessed during the consenting stage and consent was granted on 18 January 2024. We are pleased to advise, that Council has approved the Archimedes pump option in September 2024 and the pump has been ordered in December 2024.

We are working with DOC and Fish and Game to ensure that adverse effects on the Lower Kaituna Wildlife Management Reserve are minimised and mitigated and have applied for a Concession/Easement with DOC, allowing Council to access and use the small area of reserve land for the project works.

Works are currently underway to prepare the tender documents for a Design and Build contract.

3D – structure impressions



Planned Completion date-Stage 2: June 2027 (TBC during tender)

Project 2 – Freshwater Quality and Quantity Limits

Outputs - 2A Identified freshwater objectives and limits/Project 2B Draft Regional Plan Change / Project 2C Formal Regional Plan change process

Project Lead – BOPRC Essential Freshwater Policy Programme – Jo Watts, Freshwater policy Kaituna Action Plan update

Progress Update

These three projects form part of Toi Moana Bay of Plenty Regional Council's Freshwater Policy Programme. We are continuing work on changes to the Bay of Plenty Regional Policy Statement (RPS) and Regional Natural Resources Plan (RNRP) to implement the National Policy Statement for Freshwater Management 2020 (NPSFM) and also reviewing the freshwater related chapters. Successive, central government changes to freshwater legislation mean the timeframes set out in Te Tini a Tuna are unlikely to be met.

In December 2023, Government amended the deadline for notifying freshwater changes from Dec 2024 to Dec 2027. It also announced freshwater reform including their intention to progress replacing the NPSFM2020 and amending freshwater regulations within 18 – 24 months. As a result, in February 2024, Toi Moana Councillors decided to extend the timeframe for notifying proposed freshwater changes to from December 2024 to September 2025.

In October 2024, the Government changed the Resource Management Act 1991 to stop regional councils from notifying freshwater changes until the NPSFM 2020 is replaced, or 31 December 2025 (whichever is sooner). In light of this, Toi Moana Councillors have decided to pause release of the draft freshwater changes until national freshwater direction is more certain. Staff will continue targeted conversations with tangata whenua and stakeholders on key draft freshwater topics that the programme was building towards. Identified topics include water quantity limits; enabling environmental enhancement e.g. rules for sediment detention devices and constructed treatment wetlands; farming land use options to reduce contaminant losses; and on-site effluent treatment (OSET). These topics are not new and are continuing discussions that began in 2023.

Ngā mea e whai ake nei Next steps

- Toi Moana continues to maintain an open invite for iwi, hapū and tangata whenua to engage with us when they are ready to do so. Please contact Kerry Brown if you have any queries –Kerry.Brown@boprc.govt.nz
- Continue to support various iwi led projects to advance their input and advice into this work programme.
- Continue progressing draft policy options and refining draft plan changes working towards the targeted release of draft RPS & RNRP freshwater changes for feedback once Toi Moana has made a decision to do so.

Ko etahi atu kōrero Further information

- Keep informed - subscribe to the 'Freshwater Flash' eNewsletter [here](#). (press 'Ctrl' button and click on underlined text to go to website links).
- Further information about the freshwater changes is available [here](#).
- Information about how Toi Moana is [involving tangata whenua](#) in this freshwater mahi.
- Here is the [Region wide overview](#), the Kaituna FMU Story, [view the recording](#) of the 4 Aug Kaituna online engagement webinar.
- Toi Moana continues to maintain an open invite for iwi, hapū and tangata whenua to engage with us when they are ready to do so.
- Find Regional Council's Strategy and Policy Committee and Te Maru o Kaituna Committee agenda reports [here](#)

Project 3 – Consented Takes and Discharges

Outputs - 3A - Annual Compliance Report about consented water takes and discharges/3C annual reporting by Regional Council about stormwater discharges to Kaituna River and Drainage Schemes

Project Lead: Stuart Standen

Progress Update

The Regulatory Compliance team completed 1,117 Compliance Monitoring Actions related to water takes, discharges, and stormwater discharges within the Te Maru o Kaituna Rohe during August 2024 to January 2025 monitoring period. Compliance Monitoring Actions are made up of both visits to the consent holders site and processing data at the office; and are assessed as either: complying, low risk non-compliance, moderate non-compliance and significant non-compliance against the conditions of consent which have been assessed. Of the total number of Compliance Monitoring Actions 82% were assessed to be complying, which is an increase from 75% from the previous reporting periods. The majority of the 20 significant non-compliance detected are associated with exceedances of water take volume consent limits.

Compliance Monitoring Actions – Water takes and discharges within TMoK rohe = 1,038

Compliance Rating	Count	%
Complying	849	82
Low risk	116	4
Moderate non-compliance	53	5
Significant non-compliance	20	2

Site Visits and follow-up site visit = 187

Compliance Rating	Count	%
Complying	143	76
Low risk	26	14
Moderate non-compliance	15	8
Significant non-compliance	3	2

Monitoring data = 930

Compliance Rating	Count	%
Complying	777	84
Low risk	94	10
Moderate non-compliance	42	4
Significant non-compliance	17	2

Per Activity

Activity	Inspection & monitoring data	Complying	%	Low Risk	%	Moderate	%	Significant	%
Dairy discharge	40	22	55	13	33	4	10	1	3
Discharge to land	52	41	79	6	12	5	10	0	0
Discharge to water	56	50	89	4	7	1	2	1	2
Earthworks or excavations	76	69	91	4	5	3	4	0	0
Groundwater take	554	475	86	44	8	24	4	11	2
Install a bore	3	2	67	0	0	1	33	0	0
OSET discharge	107	76	71	26	24	5	5	0	0
Surface water take	198	155	78	22	11	14	7	7	4
Geothermal water take	31	30	97	1	3	0	0	0	0
Geothermal discharge	0	0	0	0	0	0	0	0	0
Reclaim & drain	0	0	0	0	0	0	0	0	0
Total	1117	920	82	120	11	57	5	20	2

Discharges from Kaituna River and drainage schemes, discharge stormwater to Kaituna or tributaries

18 compliance monitoring actions

Site inspections, follow up inspections and receiving information post visit = 11

Compliance Rating	Count	%
Complying	2	100
Low risk	0	-
Moderate non-compliance	0	-
Significant non-compliance	0	-

Performance monitoring actions = 16

Compliance Rating	Count	%
Complying	16	100-
Low risk	0	-
Moderate non-compliance	0	-
Significant non-compliance	0	-

Quarterly Effluent Monitoring for: Te Puke 24891/RM16 0204

9.3 – The consent holder shall take samples of the treated wastewater (immediately after UV disinfection, prior to discharge to the wetland) once per week. Samples shall be measured using a 24-hour flow proportioned composite treated effluent sample and shall be analysed by a certified laboratory for the following parameters:

- Total nitrogen (g/m3)
- Total phosphorous (g/m3)
- Total suspended solids (g/m3)
- cBODS (g/m3)
- pH

9.4 – The consent holder shall take a grab sample of the treated wastewater (immediately after the UV treatment system, prior to discharge to the wetland) once per week and have the sample analysed by a certified laboratory, for E.coli (CFU/100 ml).

9.5 – The consent holder shall take grab samples in the Waiari Stream upstream and downstream of the discharge (after reasonable mixing) on a monthly basis and analyse the samples for the contaminants listed in Conditions 9.3 and 9.4.

Between July 2024 and 31 January 2025 WBOPDC demonstrated compliance for all monitoring required by condition 9.3 and 9.4 of consent RM16-0204, except for the Total Phosphorus Rolling Median, which exceeded the Maximum Acceptable Value (MAV) from 30 December to 31 January.

Table below contains sampling results required by condition 9.5.

Date	Site	pH	Suspended Solids - Total	BOD5 - Total	Total Phosphorus	Total Nitrogen	E. coli
17/07/2024	Upstream of Discharge	6.6	12	Lab error	0.038	1.22	190
	Downstream of Discharge	6.7	11	Lab error	0.091	1.67	190
05/08/2024	Upstream of Discharge	7.1	6	<2	Lab error	1.21	22
	Downstream of Discharge	7.1	6	<2	Lab error	1.44	19
16/09/2024	Upstream of Discharge	7.4	5	<2	0.032	1.23	19

	Downstream of Discharge	7.3	6	<2	0.121	1.37	33
21/10/2024	Upstream of Discharge	7.1	5	<2	0.037	1.17	31
	Downstream of Discharge	7.2	5	<2	0.143	1.56	34
12/11/2024	Upstream of Discharge	6.8	5	<2	0.034	1.11	140
	Downstream of Discharge	7.0	4	<2	0.132	1.41	110
10/12/2024	Upstream of Discharge	6.8	3	<2	0.033	1.12	120
	Downstream of Discharge	6.7	3	<2	0.128	1.64	120
20/01/2025	Upstream of Discharge	7.2	3	<2	0.034	1.15	86
	Downstream of Discharge	7.2	4	<2	0.004	1.38	47

WBOPDC was granted a comprehensive stormwater consent 67481 to discharge stormwater.

The first round of background monitoring took place on 3 December 2024. All results were compliant, except one E.coli exceedance in the Cannell Farm Drive waterway.

Planned Completion Date: Annual reporting requirement

Annual report will be completed by 31 August 2025.

Project 3 – Consented Takes and Discharges

Output - 3D Annual Meeting with representatives of the Rotorua Te Arawa Lakes Strategy Group

Project Lead – Hinga Marsh (Tapuika Iwi Authority)

Progress Update

No progress to report here to date. William Anaru will be contacted to progress this further.

Planned Completion Date: Date to be confirmed

Project 4 – Focus Catchments

Output - 4A Action Plans for Kopuaroa and Waitepuia/Ford Road sub-catchments

Project Leads – Tegan Arnold (BOPRC)/Anna Dawson (BOPRC)

Planned and completed land management works in the Kopuaroa and Waitepuia/Ford Road sub-catchments have been reported in previous reports to the group. In addition to those on-going works, Focus Catchment support is now also being offered to the wider Kaituna River catchment (outside of Focus Catchment areas), based on high-risk and larger land uses as the highest priority for funding.

This shift is due to the conclusion of several years of concerted engagement efforts in the Focus Catchments, whereby all landowners have been contacted and offered support, with some choosing to adopt new sustainable management practices and complete land management works etc, but being a voluntary programme, the amount of new works possible was declining, therefore we are now providing an opportunity for others in the wider catchment to receive support from BOPRC. Support will also continue to be available for those within the Focus Catchment.

Some progress has been made during the 2024/25 year within the wider Kaituna Catchments, particularly in the Upper Kaituna where landowners are approaching council to enter Environmental Programmes in support of the Kōkako Ecosystem Expansion Programme. This project aims to create a network of native forest corridors that will link discrete kokako population. This work contributes to biodiversity and water quality improvements within the catchment. In addition to works in the upper Kaituna area there have been several drain restoration projects undertaken in the lower Kaituna area in the last year.

Te Arawa Lakes Treatment Wetland: Weather has restricted earthworks significantly over the life span of this project. The remaining 25% of earthworks was completed November 2024. The final large-scale planting will be in March 2025 when plants become available. Currently the open water habitat has been seen hosting bittern and dab chicks.

Kaituna Corridor: BOPRC, private Landowners and Tapuika have been working to restore 3 contiguous properties that border significant sites of the Kaituna River. Environmental Programme activities include: 3.5ha of new wetland construction, 3.5ha of existing wetland protection and enhancement through pest plant control and native planting and restoration of an old ox-bow of the Kaituna river at the Paraiti and Kaituna River confluence.



Figure 1: Looking southeast to the Kaituna oxbow from the new wetland project. Kaituna and Paraiti river confluence pictured to the right .

Project 4 – Focus Catchments

Output - 4B Action Plans for mid-lower Waiari Sub catchment

Project Leads – EJ Wentzel (WBOPDC) and Jennifer Pearson (TCC)

Progress Update

Te Ohu Parawai is on the process of appointing a Cultural Technical Advisor to assist them in the treatment plant upgrade. This role will be to lead the design of the rock chamber, landscaping(soft, hard and cultural), diffuser structure and to keep Te Ohu Parawai informed on the project. The expectation is that this work will be concluded in the next year.

This is seen as a very exciting step forward by all to ensure there is alignment in understanding by sharing of information and communicating expectations.

Planned Completion Date: Yet to be confirmed

Project 5 – Farm Environmental Plans

Outputs - 5A Farm Environmental Plan template developed or adapted/5B Farm Environmental Plans progressed within the lower Kaituna Catchment

Project Lead – Jackson Efford (BOPRC)

Progress Update

The Government intends to improve the freshwater farm plan system. While freshwater farm plans are seen as a key tool for managing freshwater risks moving forward, sector groups and farmers have told the coalition Government that the current system is too costly and complex.

We will be exploring if there are ways to make the system more cost-effective and practical for farmers while acknowledging the good work they are already doing.

The Government may look at whether current requirements to complete a freshwater farm plan could be paused while improvements are developed. Further detail will be provided later this year.

The Government is continuing to work with sector groups to develop a pathway for integrating existing farm plans and industry programmes with the freshwater farm plan system.

[See the current freshwater farm plan regulations](#) [New Zealand Legislation website]

Planned Completion Date: 30/06/2025

Project 6 – Post Kaituna River Rediversion Enhancement

Output - 6A Restoration Work Programme Completed

Project Lead – Courtney Bell (BOPRC)

Progress Update

The Kaituna River Re-diversion and Te Awa o Ngatoroirangi/Maketu Estuary Enhancement Project was implemented:

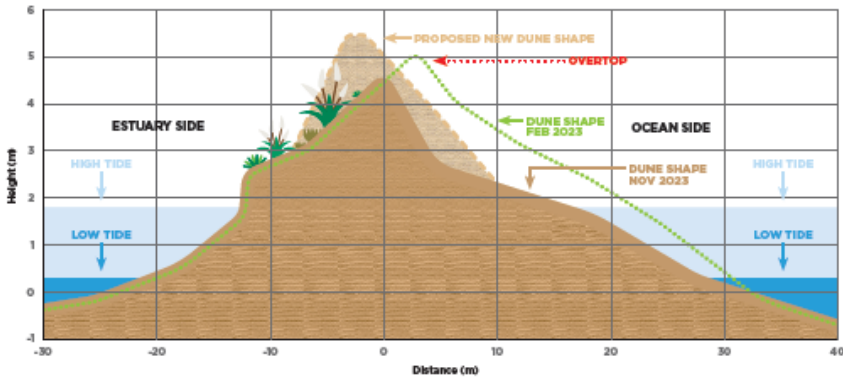
- To return at least 20% of the Kaituna River flows to Maketū (achieved 2021).
- To create at least 20 ha of new wetlands (achieved 2019).
- To increase the size of the tidal estuary by 19% (45 hectares, completed 2020).
- To maximise the ecological and cultural benefits (in progress since 2017).
- Inspections, annual cross section surveys and other monitoring are ongoing.

Due to narrowing and lowering of the spit opposite Whakaue Marae associated with both La Nina storms in 2023 and the gradual erosion of the estuarine side, a dune renourishment was undertaken by BOPRC in September 2024 to raise the height of the dune with the goal of preventing potential dune overtopping/a breach of the spit. This is due to the potential negative ecological, cultural and recreational effects on the estuary from a breach. In the long run it is predicted that breaching risk will reduce as the Re-diversion’s higher flows create wider and deeper channels in the lower estuary. Prior to this dune renourishment, BOPRC with the support of the Maketū Ōngātoro Wetland Society undertook a shore skink and katipo spider salvage and relocation. The raised dune was planted immediately following works.



WHAT COULD HAPPEN IN THE EVENT OF A STORM SURGE OR COASTAL INUNDATION

CROSS SECTION - SPIT MIDDLE



**Got questions?
Talk to our team:**
Phone: 0800 884 880
Email: michael.tyler@boprc.govt.nz



Photo showing the completed dune nourishment following planting, taken 14th January 2025.

Planned Completion Date: 2030 – although consents are held through until 2050 and the project will continue indefinitely.

Project 7 – Wetland Re-Creation

Outputs - 7A Te Pā Ika Wetland/7B Te Pourepo o Kaituna Wetland/7C Whakapoukorero Wetland/7D Wetland projects within existing EEF/Environmental Programmes

Project Lead – Tegan Arnold/Michael Tyler (BOPRC)

Progress Update

Project 7A: Te Pā Ika Wetland

- Creation of up to 20 ha new wetland completed. Plantings now becoming well established.
- Pest plant control and predator control programmes ongoing.
- Erosion along re-diversion channel at Fords Cut continues to be monitored and protection measures can be implemented if erosion worsens.
- Rubbish dumping and damage to some plantings from white baiters and other members of community. New signage to address rubbish dumping to be installed.



Drone imagery captured 18/07/2024, looking at Te Pā Ika wetland and Kaituna cut.



Drone imagery captured 18/07/2024, looking north across central spur at Te Pā Ika toward Kaituna cut.

Planned Completion Date: 30/06/2024

Project 7B: Te Pourepo o Kaituna Project

Public Easement on Tumu Kawa block

- Public easement has been for walking access in the Tumu Kawa block.

Annual update of works

- The winter 2023 5 ha of planting that was partially undertaken by the education programme are establishing well.
- Planting of remaining sedgeland areas in Waiomamae block were undertaken in autumn 2024 (30,000 plants).
- Further planting of the carpark block has recently been completed – an additional 23,000 plants were planted in January 2025.
- Continued pest plant control is ongoing throughout the whole wetland.
- Water levels and rainfall have been a continued challenge for the last year in terms of access, planting and pest plant control.

Fish monitoring

- looking at macrophytes impact on fish and been monitoring fish in the wetland as a result of improved flows into the wetland through new culverts/fish friendly gates. Write up planned for the next year.
- Write up of results planned for 2024/2025

Predator control work

- DoC are funding crew to undertake predator control targeting mustelids, cats and rats.

Bird surveys

- Matuku surveys were undertaken again October 2024 with 3 matuku heard over the course of the 3 nights.
- MPI bird banding has recently been completed for avian flu surveillance.
- Baseline bird surveys undertaken in 2019, the plan is to repeat these bird surveys this year and again in 5 years.



Drone imagery captured 18/07/24 looking over the planted dairy farmland from 2023 school education programme - Te Pourepo o Kaituna project area.



Photos of summer 2025 Carpark Block sedgeland planting (take 2025-01-21)



Drone photo taken 2024/07/18 showing Tumu Kawa block now well established (planted 2020)

Planned Completion Date: 30/06/2025

Project 7C: Whakapoukorero Wetland

- Continuing operational works associated with the newly signed Environmental Programme.
- Drone trial completed for pampas pest plant control in southern area of wetland.
- School planting programme being held at Whakapoukorero 2024 run by Maketū Ōngātoro Wetland Society and supported by the wetland committee, involving approximately 8 local schools.
- Predator control programme being implemented and pest plant control work brief for 2024/25 being renewed.
- Fish surveys planned for early 2025.
- Investigations for improving hydrological connections.
- Enhancement and track repairs scheduled for summer to ensure safe access for public and contractors.

1.5 Operational objectives / targets

1. To restore and maintain indigenous vegetation communities by achieving the following before the completion of this EP:
 - (a) reducing key environmental weeds to very low levels (<5% cover for pampas, arum lily, & Japanese honeysuckle) over the whole wetland.
 - (b) maintain very low density of willow and other pest plants in Vegetation Type 19 and reduce the grey willow densities to <5% cover.
 - (c) eliminate saltwater paspalum and other low incidence species (casuarina, tradescantia, blue morning glory, castor oil plant, kahili ginger, spindle tree, parrot's feather, and black locust) with the aim of eradicating (high priority).
2. To maintain and/or enhance populations of Threatened, At Risk, and regionally uncommon plant species present in the wetland.
3. Maintain or enhance populations of fernbird and spotless crane through animal pest control (focusing on rats, possums and mustelids). Pest animal control to be implemented by August 2023 subject to confirmation of the presence of crane and/or fernbird.
4. To protect and enhance fish populations through installation of fish friendly floodgates and hydrological investigations and fish monitoring.
5. Continue implementing programme to enhance public interaction with the site, while maintaining the sites ecological integrity.

Additional shared objectives Refer to Te Maru o Kaituna River Authority, Project 7C (wetland restoration and re-creation)



Recent drone trial February 2024 to spray pampas at Whakapoukorero



Recent Photoblique looking over Whakapoukorero wetland toward Maketū township

Project 7D: Te Huauri o Te Kawa

- New Environmental Programme (EP) was signed in November 2023.
- Funded by Bay of Plenty Regional Council (BOPRC) and Western Bay of Plenty District Council (WBOPDC).
- Total funding of \$59,664.00 and \$19,888.00 provided by BOPRC and WBOPDC respectively, over a four-year period between 2023 and 2027 Maketū Taiapure Trust undertaking fish monitoring with emphasis on inanga.
- This is a Maketū Taiapure project, with Maketū Ōngātoro Wetland Society undertaking the operational works associated with the Environmental Programme (EP).
- Operational works continuing successfully to further restore the site.
- Signage being drafted to support community awareness and interaction with the wetland.
- Work briefs for operational activities in the EP being renewed for 2024/2025.

Objectives

1. To protect and enhance the aquatic habitats:
 - 1.1 Provide suitable habitat for native migratory and non-migratory fish (refuge, rearing, residence).
 - 1.2 Maintain and protect inanga (*Galaxius maculatus*) spawning and rearing habitat.
2. To protect and enhance the wetland habitat for native flora and fauna.
 - 2.1 Suppress pest flora and fauna pressures on native biodiversity.
 - 2.3 Assist regeneration of geographically appropriate flora.
3. Biomonitoring on ecological and biological objectives to ensure objectives (1 & 2) are being achieved.
4. Support further opportunities for the community to engage with the wetland for educational and awareness purposes as appropriate.

These objectives are shared with and support the objectives of the [Te Tini a Tuna – Kaituna Action Plan 2019-2029, Project 7 \(Wetland re-creation project\)](#).



Photoblique image of Te Huauri o Te Kawa (looking upstream) with Kaituna wetland in the distance.

Outputs – 7E Lawrence Oliver Park Constructed Wetland

Project Lead – Jackson Efford (BOPRC)

Progress Update

A brand new publicly accessible wetland development and restoration is planned for Lawrence Oliver Park in Te Puke. This low-lying reserve owned by WBOPDC was previously leased for grazing but given its close proximity to town and the Te Ara Kahikatea Pathway tracks, the site has been flagged for restoration and enhancement including the construction of a biodiversity and treatment wetland. The project team includes BOPRC, WBOPDC, the Te Ara Kahikatea Pathway Society, Waitaha and Tapuika Iwi, with funding support from Fonterra. A consent and design (The design is based on the DairyNZ/NIWA constructed treatment wetland guidelines) have now been completed, and earthworks have now commenced for the joint treatment wetland project as described on the project signage below. A dawn karakia was held on the 7th of February with Waitaha and Tapuika Iwi led by Pouroto Ngaropo.



Over the coming months, 2,775m² of this park will be transformed into a treatment wetland. Treatment wetlands are built in a way that can help improve water quality in an area. This is achieved by trapping sediment, nutrients and microbes (such as *E.coli*), and reducing their ability to get into neighbouring waterways, such as drains, rivers and streams, that then flow downstream and out to sea.

Because of where this wetland is located, it will help reduce contaminants from residential and industrial stormwater runoff, help with flood storage and retention, and provide an opportunity for native plants and birds to thrive – plus, it will be a great place to stop for Te Ara Kahikatea walkway users!

Why are we doing this?

Wetlands are incredibly important ecosystems. They help to maintain water quality, support biodiversity, provide a home for some of our most vulnerable wildlife, stabilise shorelines and riverbanks, and help reduce the impacts of flooding and droughts.

Returning this space to a wetland is an outcome of Western Bay of Plenty District Council's Reserve Management Plan, which was adopted in 2022.

This area has unique cultural history, as it is adjacent to the pā site Te Aore (which was a camp for forces during battle at Te Tumu).



Thanks to our partners for making this restoration project possible:



Te Ara Kahikatea Pathway Society

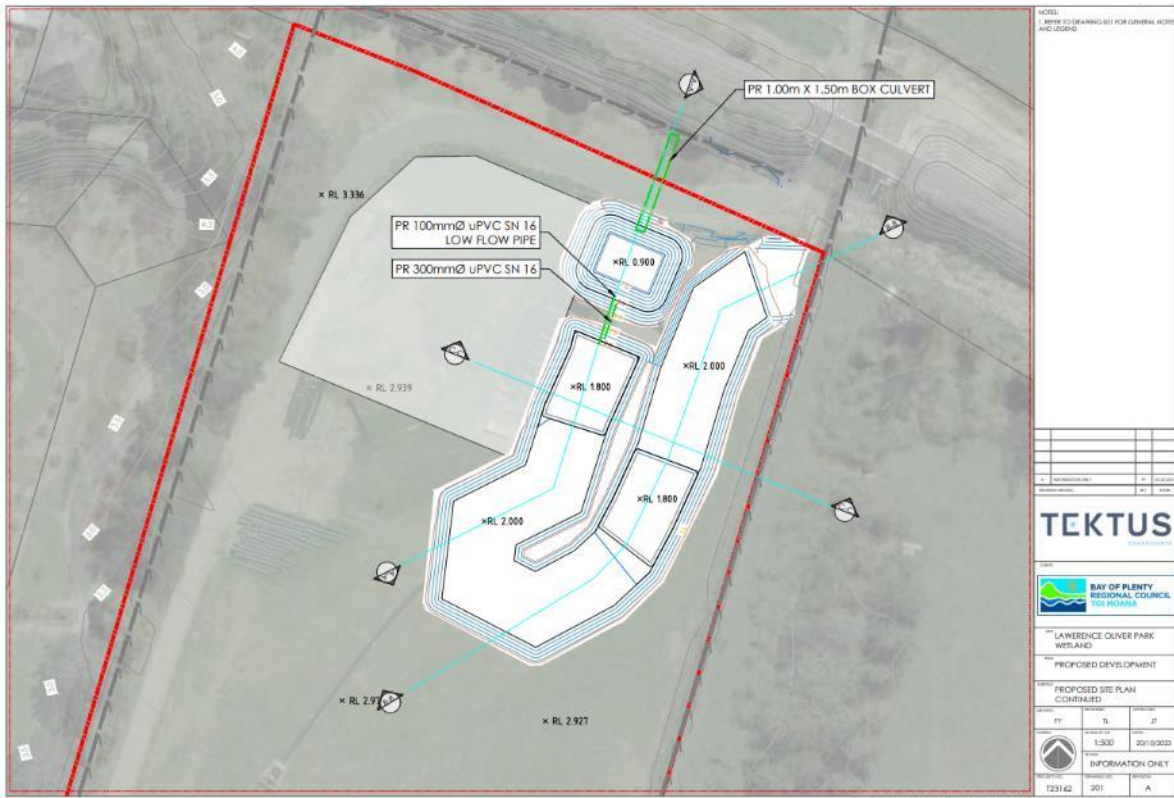


Tapuika





Lawrence Oliver Park in Te Puke- the future location of a constructed wetland and biodiversity area alongside the Te Ara Kahikatea walkway.



Wetland design for Lawrence Oliver Park.

Planned Completion Date: 30/06/2025

Project 8 – Kaituna Habitats Network

Output - 8A Work Programme developed – Te Puke/Maketū Reserve Management Plan

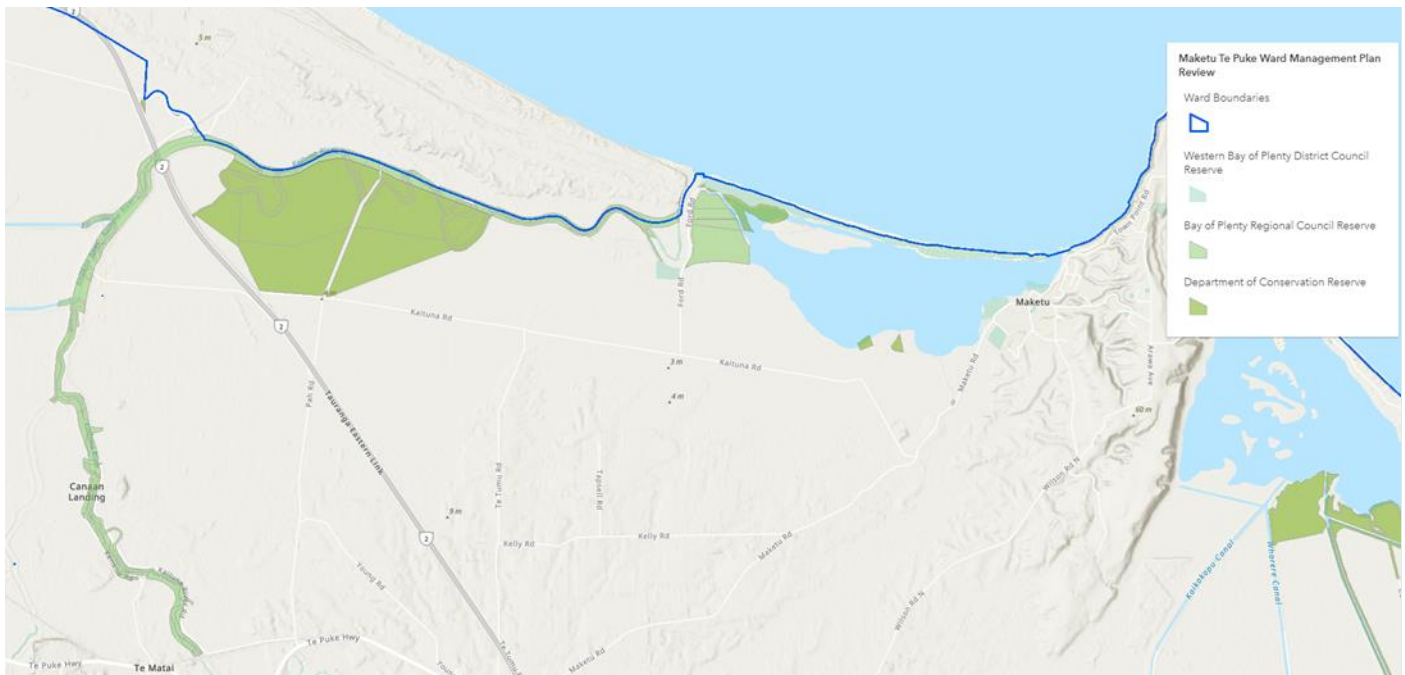
Project Lead – Jason Crummer (WBOPDC)

Progress Update

Project 8A is closed off now that the [Te Puke-Maketu RMP](#) has been adopted by Council. The decision story for the review of this RMP is available [HERE](#) and public maps can be viewed [HERE](#).

Formal consultation on the Te Puke-Maketu Reserve Management Plan is complete and the final plan adopted by Council on 14 June 2022.

As part of this review, a reserves map has been developed for the Te Puke-Maketu Ward with plans. This map is now available on Council's website and includes locations of reserves, public toilets, public playgrounds and picnic/BBQ areas. It also includes BOPRC Reserve and DOC Reserve information. This map can be further developed to include where specific wetlands are located, to better understand the Kaituna Habitats Network. Consideration will also be given to including Iwi owned land. A link to the map which is now publicly available is [here](#).



Project 8 – Kaituna Habitats Network

Outputs – 8C Work Programme developed

Project Lead – Tegan Arnold (BOPRC)

Progress Update

- Land Management Officers are continuing work with landowners in the wider Kaituna catchment to support environmental restoration projects.
- Work continues with the Paraiti Catchment Care Group to retire and plant marginal land and undertake predator control in bush corridors and margins between the Kaharoa Conservation Area and Ōtānewainuku.
- A project is currently under development for the protection and enhancement of a 70-hectare area of native bush adjacent to the Kaharoa Kōkako Trust management area where it is expected that kōkako are likely to expand to in the future.
- A public meeting was held in April 2024 with landowners in the Kaharoa area to discuss predator control and planting works in the upper Paraiti/Mangorewa catchment adjacent to Kaharoa Kōkako Trust area. There has been some interest in a coordinated approach for pest animal control in this area.

Planned Completion Date: 2050

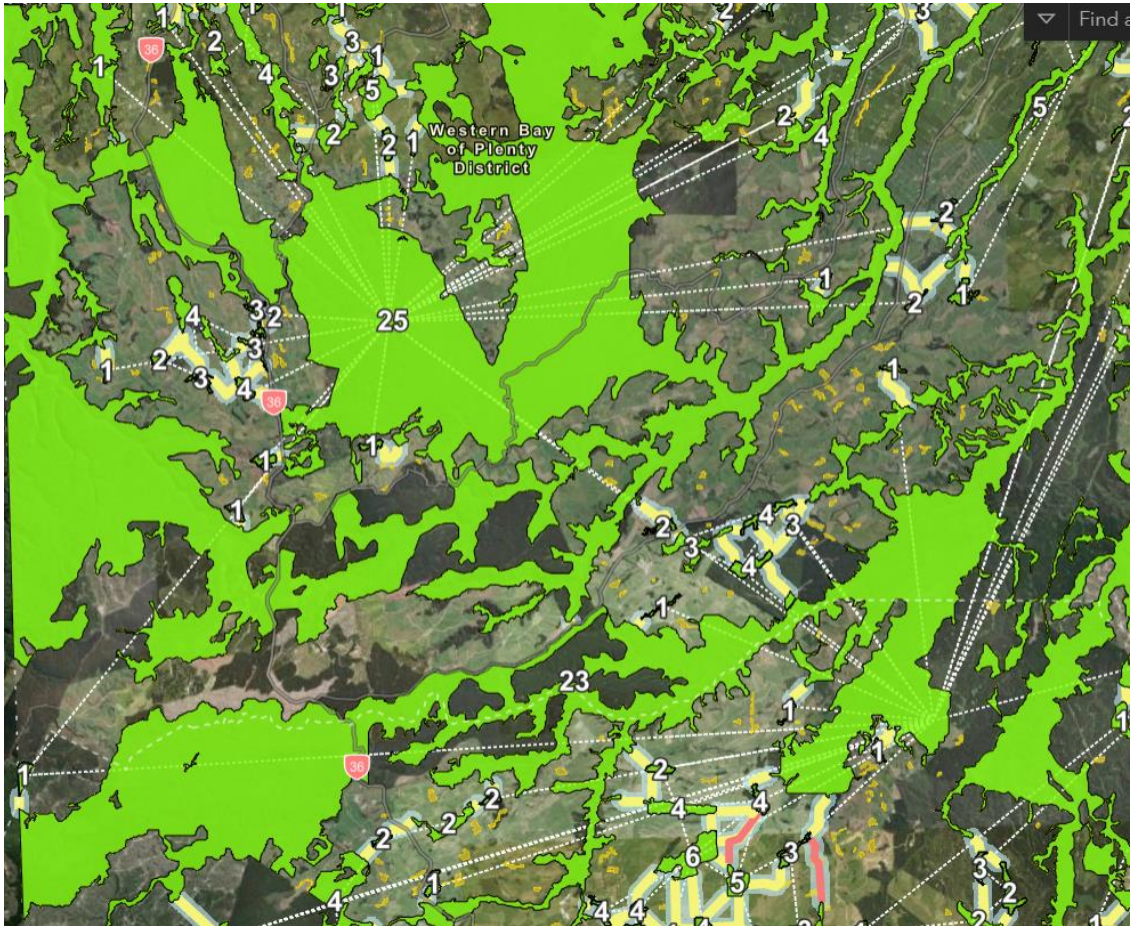
Project 8 – Kaituna Habitats Network

8C At least one Habitat Network Connection Project complete

Project Lead – Hinga Marsh (Tapuika Iwi Authority)

Progress Update

- A Connectivity Strategy map has been produced for KEEP to outline connections between suitable habitat for kōkako across native forests in the rohe. This map can show the potential places where pest control can be targeted for maximum effectiveness to further build on the habitat connectivity around the Kaituna.
- [ECOLOGICAL CONNECTIVITY STRATEGY - Map Viewer](#)



Planned Completion Date: Ongoing Project with no end date as yet identified.

Project 9 – Pātaka Kai

Outputs - 9A Kaiawa Working Group established/9B Work programme developed/9C Priority habitat restoration projects identified

Project Lead – Hinga Marsh (Tapuika Iwi Authority)

Progress Update

Highlights over the last six months:

- The implementation of Pātaka Kai has been successful so far.
- Main restoration work on Pātaka Kai has been completed with weeding and maintenance of plantings undertaken in the summer months.
- Weeding, plant release and maintenance on Kaiwaka complete.
- Eucalyptus removed from Tumu Kawa/Boat Ramp.
- Pampas removal completed.
- The planting at Titirangi is complete and pastoral care of plants will be needed.
- Kaituna boat ramp has been planted in sections in collaboration with local schools to provide educational outcomes.
- Monitoring plans have been produced based on the original Pātaka Kai monitoring plan (2023), with variations depending on the site specifics.



Planting day at Bell Rd boat ramp with local schools September 2024

Planned Completion Date: TBC

Project 10 – Kaituna Community Connection

Outputs - 10A Communications Strategy developed/10B TMoK Website Developed/10C Annual work plan released/10D At least one annual community event/10E River Symposium held

Project Lead – Hinga Marsh (Tapuika Iwi Authority)

Progress Update

10A Communications Strategy Developed – The website has now been completed with training to be provided in the New Year. The website forms a major part of the communications strategy., The communications strategy is being finalised as a final draft for approval by the committee.

Planned Completion Date: 28/02/2023

10B TMoK Website Developed - Work on a new website for Te Maru o Kaituna has been completed.

Planned Completion Date: 31/08/2022

10C Annual Work Plan Released - The secretariat work plan has been completed.

Planned Completion Date: 31/08/2022

10D At least one annual community event – Update will be provided within the next Biannual Report.

Planned Completion Date: TBC

10E River Symposium held – This has been picked up by the Tapuika Iwi Authority to lead and will be undertaken as per the date below.

The River Symposium was planned to be completed this year however due to staff changes we have been unable to fulfil this mahi – we are looking at completing this next summer.

We are very keen to continue planning to develop a robust project plan and budget to be used for further funding proposals in the FY25 with other NGOs/GO opportunities. We anticipate a budget required of \$25,000 to complete this by June 2025.

Planned Completion Date: 30/04/2025

Project 11 – Kaituna River Access

Outputs - 11A River Access Mapping Task Completed/11B – Feasibility Study Completed for Waka Launching Site

Project Lead – Jason Crummer (WBOPDC)

Progress Update

Project 11A – Formal consultation on the Te Puke-Maketu Reserve Management Plan is complete and the final plan adopted by Council on 14 June 2022.

This plan includes reserve specific information for Council owned reserves and outlines key information and approaches to the management of these, including community aspirations for each site and specifically recognises Te Tini a Tuna – Kaituna Action Plan 2019-2029.

Improved access to the Kaituna River has been reflected in the plan and especially under the reserve management approach for Bell Road Reserve, where Te Tini a Tuna and the investigation for the site to be used for a waka launching site is specially included.

Click on the link to view the Te Puke – Maketū Reserve Management Plan [Te Puke-Maketū RMP](#).

Project 11B – Otaiparia Reserve – Ford Road, Maketu

Funding to continue implementing the concept plan for Otaiparia Reserve has been moved to the 2026 financial year of the 2024-34 LTP.

The waka launching feasibility study is now complete – We're just gradually adding new actions to our work programmes for the next 2 years.

Planned completion date: Indicative timing for feasibility and implementation is 2022-2026.

Project 12 – Kaituna Cycleway/Walkway

Outputs - 12A Strategy Completed/12B Strategy Implementation (TEL to Maketū Connection)

Project Lead – Scott Parker (WBOPDC)

Progress Update

The only change since the previous update, is that there is no funding to progress a path connection at this stage (due to Government and Council funding cuts) for funding towards a cycleway along the stopbank between the TEL and Ford Road (Otaiparia Reserve) at Maketū, was declined. The project status is currently “amber” reflecting that funding is not yet allocated towards this project and therefore cannot be advanced for now. Implementation timing remains subject to funding prioritisation (zero funding is currently allocated) and all land access requirements resolved.

We understand that discussions by BOPRC with a private property owner, about cycleway route alignment along a short section of privately owned stopbank may have commenced and we look forward to an update about that if this is the case.

Staff have requested feedback from TMOk governance as to any expectations about timing or other aspects about this project – **none has yet been received.**

Planned Completion Date: Unknown at this stage

Project 13 – Kaituna Cultural and Historical Heritage

Outputs - 13A Interpretation Plan Completed/13B Interpretation Plan Implementation

Project Lead – Hinga Marsh (Tapuika Iwi Authority)

Progress Update

Planned Completion Date: Yet to be confirmed

Project 14 – Upper Catchment ‘Gateway’

Output - 14A Concept Plan Developed

Project Lead – Nick Chater (RLC)

Progress Update

The main initiatives we have actioned has been to increase the area and effectiveness of our planting and pest eradication projects. As such the trust itself has grown to increase numbers from within our community to lead planting and pest eradication projects. We have new areas and are engaging with local Iwi to plant in such locations as the Houmaitawhiti Marae Urupa (Otaramarae). We applied for and were successful with funding from Rotorua Trust and this enabled the removal of pest species and to plant and in more areas. Alongside our projects we supported others in the community doing similar work (John Trainer).

Another outcome has been working with local social service, community organizations and having rangatahi and whānau groups be involved in planting projects.

Moving forward - our future aspiration is to continue with the mahi, check and monitor trapping lines. Check and monitor our planting areas, including the ‘freeing’ of plants and ongoing pest plant eradication. We will continually have areas to plant. Trapping, although numbers of possums and rats are being caught is very much slowing, this will be ongoing.

An aspiration we have is to continue collaborating with Te Maru o Kaituna River Authority as we believe we will have greater impact in a much wider area. If there is an opportunity to collaborate in the future, we are very keen. Also, any opportunity to access plants through other projects that TMOk and Tapuika are doing would be appreciated, as funding seems to get harder and harder to come by.

We are seeing greater numbers of birds returning and certain species such as Pohutukawa and our native Mistletoe returning.

A full update on operation outcomes will be provided for the February – July 2025 Biannual Report



Community planting day - Houmaitawhiti.

Planned Completion Date: Click or tap to enter a date.

Project 16 – State of the Awa Integrated Monitoring and Reporting

Output - 16A Integrated Monitoring Plan Developed/16B Implementation of Integrated Monitoring Plan

Project Lead – Gina Mohi (BOPRC)

Progress Update

Incorporating Mātauranga Māori into research and monitoring within the Kaituna catchment:

- Further discussions with affiliated Iwi in the lower catchment to develop a collective strategic vision are required.
- Iwi-led Mātauranga research and culturally led monitoring continues to build kaitiaki capacity and capability.
- Resourcing the Iwi collective to deliver Project 16 continues to be a key barrier to implementation.

Planned Completion Date: 2023-2025

Project 17 – Kaituna Catchment Network Mapping

Output - 17A Completed Stocktake and Collation of Available Information BOPRC most aspects, WBOPDC River Access and Cycleway Component

Project Leads – Georgia Edwards (BOPRC), Jason Crummer (WBOPDC)

Output - 17B – Completed Feasibility Study for Project 7

Project Lead – Georgia Edwards (BOPRC)

Output - 17C Completed Feasibility Study for Project 8 – BOPRC most aspects, WBOPDC River Access and Cycleway Component

Project Leads – Georgia Edwards (BOPRC), Jason Crummer (WBOPDC)

Progress Update

The dashboard was presented to the TMoK forum on 16th August 2024. During the meeting, some feedback on content of the dashboard was received on what has been done so far.

Based on this, the following changes were made:

- River access and cycleway information from WBOPDC provided from Jason Crummer and Scott Parker. This is ready to be made public on the dashboard, seeking approval from Western Bay of Plenty District Council to make this public. When permission is granted, these will be publicly available.
- Added marae locations to the map.
- Added river centrelines to the map.
- Added boat ramps to the map.
- Added wells/bores to the map.
- Added DOC Potential Ecosystem extent layer.
- Added a link to our historic imagery comparison tool.
- Removed some asset related layers which were not relevant to the Kaituna area (Whakatāne focused information).

The dashboard also previously filtered all datasets to be cut off at the Kaituna catchment boundary. This has been changed to show all the data for the BOP region and have kept the Kaituna boundary prominently on the map. This focuses the user on the Kaituna catchment but allows them to also get context on what is happening in the surrounding environment.

The graphs and statistics on the dashboard currently filter to summarize what is in particular areas of interest for the user. However, this may include data outside of the Kaituna catchment if it is visible on the map.

The next steps for the dashboard is to continue getting feedback on the dashboard, find a balance between filtering data to be Kaituna catchment specific and providing surrounding data that adds to the context of the catchment, and continuing to look for more cultural monitoring focused datasets that are able to be included.

The dashboard can be accessed through the following link:

<https://experience.arcgis.com/experience/0f73f47b6b6f4afe9d96317ba82dbcc2>

Planned Completion Date: Staff have requested feedback from TMoK governance as to any expectations about timing or other aspects about this project.



**KAITUNA
HE
TAONGA
TUKU
IHO** A TREASURE
HANDED DOWN



Te Maru
o Kaituna