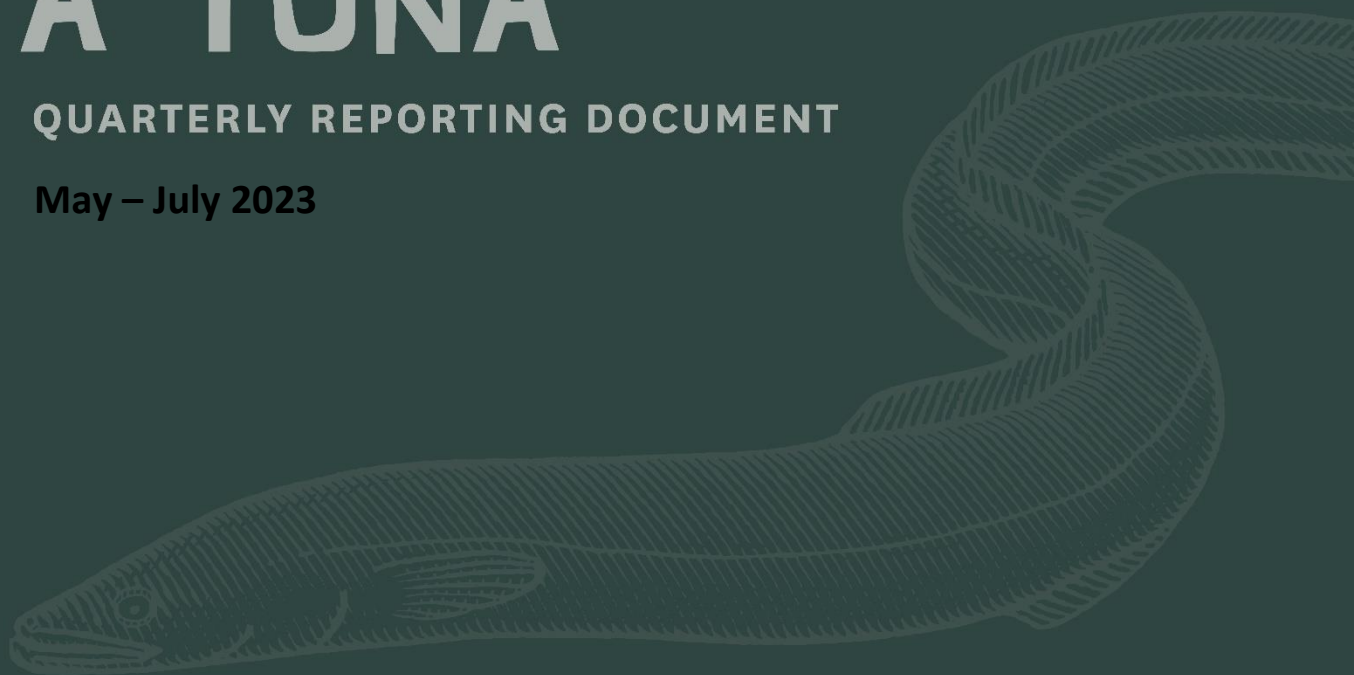




TE TINI A TUNA

QUARTERLY REPORTING DOCUMENT

May – July 2023



Projects not yet Started

- ❖ **Project 15 – Coastal Park Network**

Outputs - 15A Concept Plan Completed/15B Concept Plan Implementation

- ❖ **Project 18 – River Restoration and Enhancement Fund**

Outputs - 18A Fund Established/18B At Least Two External Funding Partners Secured/18C Annual Funding Round

| Project | Lead Agency | Overall Status | Overall Progress |
|---|------------------|----------------|------------------|
| Project 1 - Lowland Drains and Drainage Canal Improvement | BOPRC | Green | 25% |
| Project 2 – Freshwater Quality and Quantity Limits | BOPRC | Green | 40% |
| Project 3A, 3C – Consented Takes and Discharges | BOPRC | Green | 100% |
| Project 3B – Consented Takes and Discharges | WBOPDC, RLC, TCC | Green | 100% |
| Project 3D – Consented Takes and Discharges | TMoK | Green | 10% |
| Project 4A – Focus Catchments | BOPRC | Green | 45% |
| Project 4B – Focus Catchments | WBOPDC/TCC | Amber | 10% |
| Project 5 – Farm Environmental Plans | BOPRC | Amber | 10% |
| Project 6 – Post Kaituna River Rediversion Enhancement | BOPRC | Green | 55% |
| Project 7 – Wetland Re-Creation | BOPRC | Green | 70% |
| Project 8A – Kaituna Habitats Network | WBOPDC | Green | 100% |
| Project 8A, 8B – Kaituna Habitats Network | BOPRC | Green | 25% |
| Project 9 – Pataka Kai | TMoK | Green | 50% |
| Project 10 – Kaituna Community Connection | TMoK | Green | 70% |
| Project 11 – Kaituna River Access | WBOPDC | Green | 55% |
| Project 12 – Kaituna Cycleway/Walkway | WBOPDC | Amber | 10% |
| Project 13 – Kaituna Cultural and Historical Heritage | TMoK | Amber | 0% |
| Project 14 – Upper Catchment ‘Gateway’ | RLC | Green | 75% |
| Project 16 – State of the Awa Integrated Monitoring and Reporting | BOPRC | Amber | 10% |
| Project 17 – Kaituna Catchment Network Mapping | BOPRC, WBOPDC | Green | 45% |

Project 1 - Lowland Drains and Drainage Canal Improvement

Output - 1A Lowland Drains Rehabilitation Plan

Project Lead – Jackson Efford

Progress Update

- Best practice drains upgrade work is continuing across up to 10 properties (14 km) this year. Rivers and Drainage (\$35,000) contribution is now fully allocated to drain works this financial year. Co-funding provided from land management team and landowners.
- Monitoring continues on the TAML farm paired drain experiment, with all battering, fencing and planting now complete (to be compared/monitored against similar drains with no enhancements applied to determine effectiveness of the treatment).
- Current costs to restore drains to best practice standard estimated at around \$20,000-\$40,000/km (includes re-battering drain, new fencing, and native planting). Opportunities exist to help reduce costs.
- Wet weather has prevented any winter fencing work from occurring, but a number of plant orders have been placed for winter 2023 planting.
- Development of a Lowland Drains Strategy would be useful to help prioritise works areas and leverage LTP funding for works in future.

Planned Completion date: [30/06/2030](#)



Recently battered, fenced and planted drain in the Waitepuia Focus Catchment “DairyNZ best practice lowland drain standard”.

Project 1 - Lowland Drains and Drainage Canal Improvement

Output - 1B Ford Road Pump Stations Upgrade (relocation)

Project Lead – Kathy Thiel-Lardon (BOPRC)

Progress update

This project was on hold for a large portion of 2022/23 to fit in with investigations undertaken for the Rangiuru Business Park development. These have progressed sufficiently for work to proceed on the pump station. The Rangiuru Business Park will be a part funder of the pump station upgrade and will have a special rating category for year-to-year operations and maintenance.

Resource Consents have now been lodged for the pump station construction and drain widening works. The detailed design is underway. It is anticipated that all going well that a tender for construction will be sought in late 2023 with construction commencing in early 2024.

Planned Completion date: December 2024

Project 2 – Freshwater Quality and Quantity Limits

Outputs - 2A Identified freshwater objectives and limits/Project 2B Draft Regional Plan Change / Project 2C Formal Regional Plan change process

Project Lead – BOPRC Essential Freshwater Policy Programme – Project Lead Team (Jo Watts, Kaituna Action Plan update)

Progress Update

These three projects form part of Bay of Plenty Regional Council or Toi Moana's Essential Freshwater Policy Programme (EFPP). We are continuing work on big changes to the Bay of Plenty Regional Policy Statement (RPS) and Regional Natural Resources Plan (RNRP) to implement the National Policy Statement for Freshwater Management 2020 (NPSFM) at the same time as reviewing the freshwater related chapters of the RPS and RNRP. As outlined in the last quarterly reports, tight timeframes are necessary to achieve notification of changes to the RPS and RNRP by 2024, required by the legislation. Although there has been slippage, the programme continues to progress according to the overarching timeline -Te rārangi wā (below). The focus for 2023 is continuing to involve tangata whenua, delivery of hui a rohe wai māori as well as face to face and online community engagement. Draft policy options will be refined in response to feedback received, prior to Toi Moana making decisions about what proposed changes to publicly notify in 2024.

Ngā kaupapa miramira Highlights – May 2023 to July 2023

- Tangata whenua via iwi and hapū, and co-governance groups were invited to provide early input on draft policy options in January and August 2022.
- Several tangata whenua groups have taken up the offer to be involved in the freshwater mahi including for the Kaituna since approval of [Te Hononga](#) in 2020. Toi Moana staff continue to be available as opportunities arise.
- RPS Change 5 (Kaituna River) is now operative which means [Kaituna, he taonga tuku iho – a treasure handed down](#) - the Kaituna River document is recognised in the regional planning document. It must inform the freshwater changes to the regional plan and any district plan changes relevant to the Kaituna.
- Hui a rohe wai māori were held in May, and preparation is underway for the August round.
- The Kaituna Freshwater Futures Community Group reconvened for one last session.
- Kaituna Freshwater drop-in sessions were held on 6 May at the Te Puke Memorial Hall and 6 July at Whakaue Marae, Maketu. The next is an online session in August.



Te Tini A Tuna – Quarterly reporting document

Ngā mea e whai ake nei Next steps

- Continue to invite and support involvement of tangata whenua
- Continue to support various iwi led projects to advance their input and advice into this work programme
- Continue progressing key policy workstreams at pace
- Continue delivering community engagement events from April to September 2023 in each of the 13 draft freshwater management units.

Ko etahi atu kōrero Further information

- Keep informed - subscribe to the 'Freshwater Flash' eNewsletter [here](#). (press 'Ctrl' button and click on underlined text to go to website links)
- Further information about the freshwater changes is available [here](#). The list of engagement events is at the bottom of the page.
- Information about how Toi Moana is [involving tangata whenua](#) in this freshwater mahi.
- Here is the [Region wide overview](#), the [Kaituna FMU Story](#)
- Tukua tō kōrero! Have your say about changes to freshwater management online [here](#)
- Contact the Toi Moana's Kaupapa Māori team to get involved in tangata whenua freshwater mahi
- Check out Te Maru o Kaituna's website [here](#)
- Find Regional Council's Strategy and Policy Committee and Te Maru o Kaituna Committee agenda reports [here](#)



Project 3 – Consented Takes and Discharges

Outputs - 3A - Annual Compliance Report about consented water takes and discharges/3C annual reporting by Regional Council about stormwater discharges to Kaituna River and Drainage Schemes

Project Lead: Stuart Standen

Progress Update

The Regulatory Compliance team completed 405 Compliance Monitoring Actions related to water takes, discharges, and stormwater discharges within the Te Maru O Kaituna Rohe during the 28 April 2023 and 19 July 2023 monitoring period. Compliance Monitoring Actions are made up of both visits to the consent holders' site and processing data at the office; and are assessed as either: complying, low risk non-compliance, moderate non-compliance and significant non-compliance against the conditions of consent which have been assessed. Of the total number of Compliance Monitoring Actions 80% were assessed to be complying, which is a decrease from 89% from the previous reporting periods. Significant non-compliance across all activities remained stable at 1.2% which is representative of the long-term average for significant non-compliance. Compliance varied considerably between activities within the TMOk Rohe with OSET and dairy discharges being one of the lowest rated in complying for the reporting period once again and groundwater and surface water takes having the highest instances of compliance.

Compliance Monitoring Actions – Water takes and discharges within TMok rohe = 405

| Compliance Rating | Count | % |
|----------------------------|-------|----|
| Complying | 35 | 73 |
| Low risk | 4 | 8 |
| Moderate non-compliance | 5 | 10 |
| Significant non-compliance | 4 | 8 |

Site Visits and follow-up site visit = 48

| Compliance Rating | Count | % |
|----------------------------|-------|----|
| Complying | 75 | 77 |
| Low risk | 15 | 15 |
| Moderate non-compliance | 7 | 7 |
| Significant non-compliance | 1 | 1 |

Monitoring data = 357

| Compliance Rating | Count | % |
|----------------------------|-------|-----|
| Complying | 289 | 81 |
| Low risk | 63 | 18 |
| Moderate non-compliance | 4 | 1 |
| Significant non-compliance | 1 | 0.3 |

Per Activity

| Activity | Inspection & monitoring data | Complying | % | Low Risk | % | Moderate | % | Significant | % |
|-----------------------|------------------------------|-----------|-----|----------|----|----------|---|-------------|---|
| Dairy discharge | 13 | 6 | 46 | 7 | 54 | 0 | 0 | 0 | 0 |
| Discharge to land | 32 | 26 | 81 | 3 | 9 | 2 | 6 | 1 | 1 |
| Discharge to water | 21 | 18 | 85 | 3 | 14 | 0 | 0 | 0 | 0 |
| Groundwater take | 155 | 144 | 92 | 10 | 6 | 0 | 0 | 1 | 1 |
| Install a bore | 13 | 13 | 100 | 0 | 0 | 0 | 0 | 0 | 0 |
| OSET discharge | 74 | 26 | 35 | 38 | 51 | 7 | 9 | 3 | 3 |
| Surface water take | 83 | 78 | 93 | 5 | 6 | 0 | 0 | 0 | 0 |
| Geothermal water take | 14 | 13 | 92 | 1 | 7 | 0 | 0 | 0 | 0 |
| Total | 405 | | | | | | | | |

Annual reporting by Regional Council about stormwater discharges from Kaituna River and drainage schemes, discharge stormwater to Kaituna or tributaries

7 compliance monitoring actions

Site inspections, follow up inspections and receiving information post visit = 3

| Compliance Rating | Count | % |
|----------------------------|-------|-----|
| Complying | 3 | 100 |
| Low risk | 0 | 0 |
| Moderate non-compliance | 0 | 0 |
| Significant non-compliance | 0 | 0 |

Performance monitoring actions = 4

| Compliance Rating | Count | % |
|----------------------------|-------|----|
| Complying | 3 | 75 |
| Low risk | 1 | 25 |
| Moderate non-compliance | 0 | 0 |
| Significant non-compliance | 0 | 0 |

Planned Completion Date: Completed for this reporting period

Project 3 – Consented Takes and Discharges

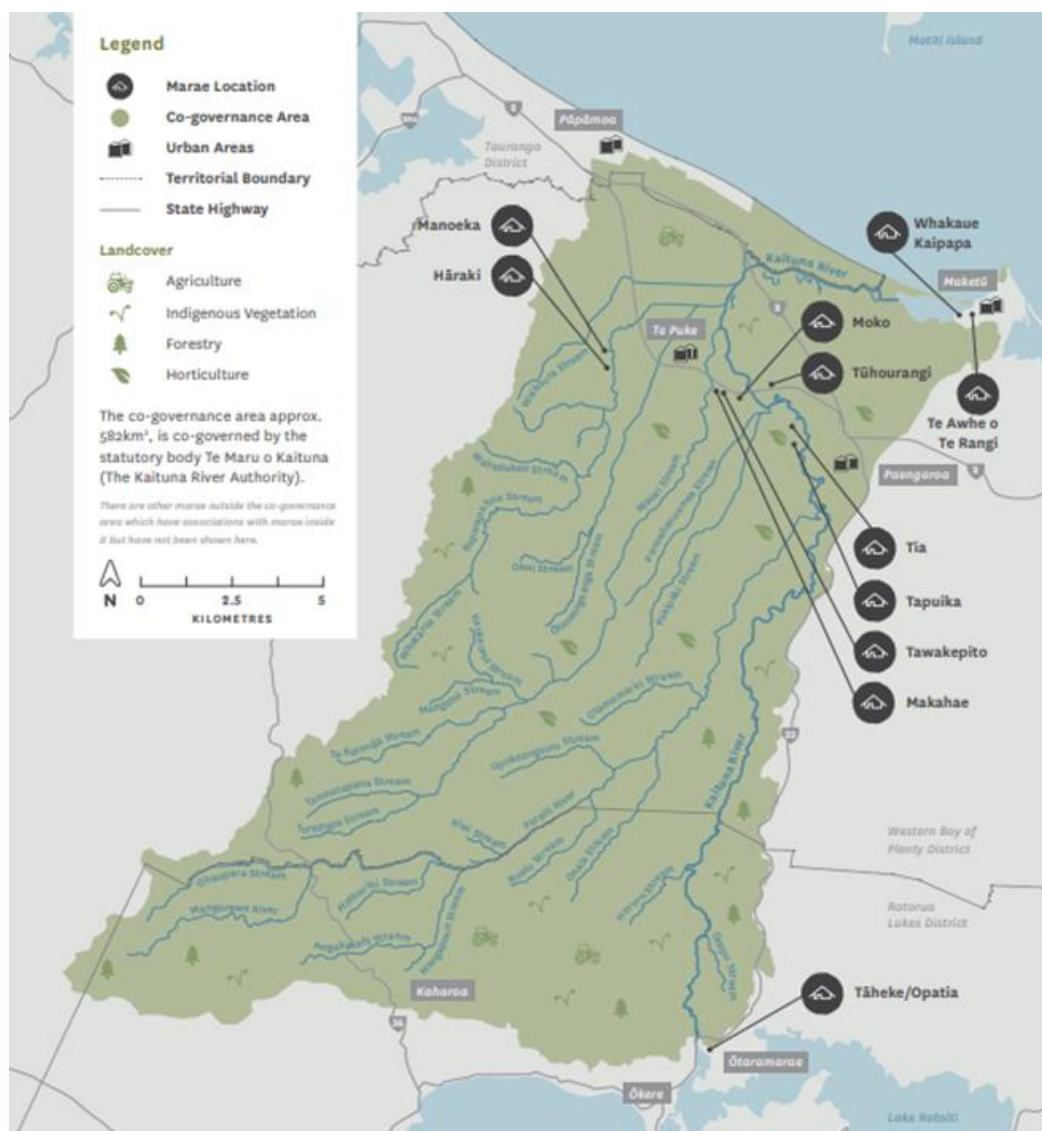
Output - 3B Annual reporting by city and district councils about urban wastewater and stormwater management

Project Leads – Chris Chen (WBOPDC), Jim Summers (TCC)

Progress Update

- TCC Reporting will be completed as the consents require for 2022/2023.
- RLC – There are no urban wastewater or stormwater management systems within the Rotorua part of the Kaituna co-governance area, as can be seen on this map showing territorial boundaries. An update from RLC is not applicable for this project.

Planned Completion Date: Annual reporting requirement



Quarterly Effluent Monitoring for: Te Puke 24891/RM16 0204

9.3 – The consent holder shall take samples of the treated wastewater (immediately after UV disinfection, prior to discharge to the wetland) once per week. Samples shall be measured using a 24-hour flow proportioned composite treated effluent sample and shall be analysed by a certified laboratory for the following parameters:

- Total nitrogen (g/m3)
- Total phosphorous (g/m3)
- Total suspended solids (g/m3)
- cBODS (g/m3)
- pH

9.4 – The consent holder shall take a grab sample of the treated wastewater (immediately after the UV treatment system, prior to discharge to the wetland) once per week and have the sample analysed by a certified laboratory, for E.coli (CFU/100 ml).

9.5 – The consent holder shall take grab samples in the Waiari Stream upstream and downstream of the discharge (after reasonable mixing) on a monthly basis and analyse the samples for the contaminants listed in Conditions 9.3 and 9.4.

Between April 2023 and July 2023, WBOPDC demonstrated compliance for all monitoring required by condition 9.3 and condition 9.4 of the consent RM16 0204. Table below contains sampling results required by condition 9.5.

| Date | Site | pH | Suspended Solids - Total | BOD5 - Total | Total Phosphorus | Total Nitrogen | E. coli |
|------------|--------------------------|-----|--------------------------|--------------|------------------|----------------|---------|
| 17/04/2023 | Upstream of Discharge | 7.1 | 19 | 2 | 0.1 | 1.05 | 190 |
| | Down stream of Discharge | 7.1 | 17 | 2 | 0.2 | 1.31 | 230 |
| 15/05/2023 | Upstream of Discharge | 7 | 41 | 2 | 0.1 | 1.13 | 80 |
| | Down stream of Discharge | 7 | 56 | 2 | 0.1 | 1.24 | 98 |
| 26/06/2023 | Upstream of Discharge | 6.9 | 18 | 2 | 0.1 | 1.26 | 100 |
| | Down stream of Discharge | 7 | 21 | 2 | 0.1 | 1.32 | 56 |

WBOPDC was granted a comprehensive stormwater consent 67481 to discharge stormwater, a Monitoring Plan required by this consent is being developed. Stormwater monitoring will be implemented upon completion of the Monitoring Plan.

Planned Completion Date: Annual reporting requirement

Annual report will be completed by 31 August 2023.

Project 3 – Consented Takes and Discharges

Output - 3D Annual Meeting with representatives of the Rotorua Te Arawa Lakes Strategy Group

Project Lead – Chairman Flavell/Jane Waldon (TMoK)

Progress Update

A meeting between the representatives will be scheduled for 2023.

Planned Completion Date: Date to be confirmed

Project 4 – Focus Catchments

Output - 4A Action Plans for Kopuaroa and Waitepuia/Ford Road sub-catchments

Project Leads – Tegan Arnold (BOPRC)/Anna Dawson (BOPRC)

Planned and completed land management works in the Kopuaroa and Waitepuia/Ford Road sub-catchments have been reported in previous reports to the group. In addition to those on-going works, Focus Catchment support is now also being offered to the wider Kaituna River catchment (outside of Focus Catchment areas), based on high-risk and larger land uses as the highest priority for funding.

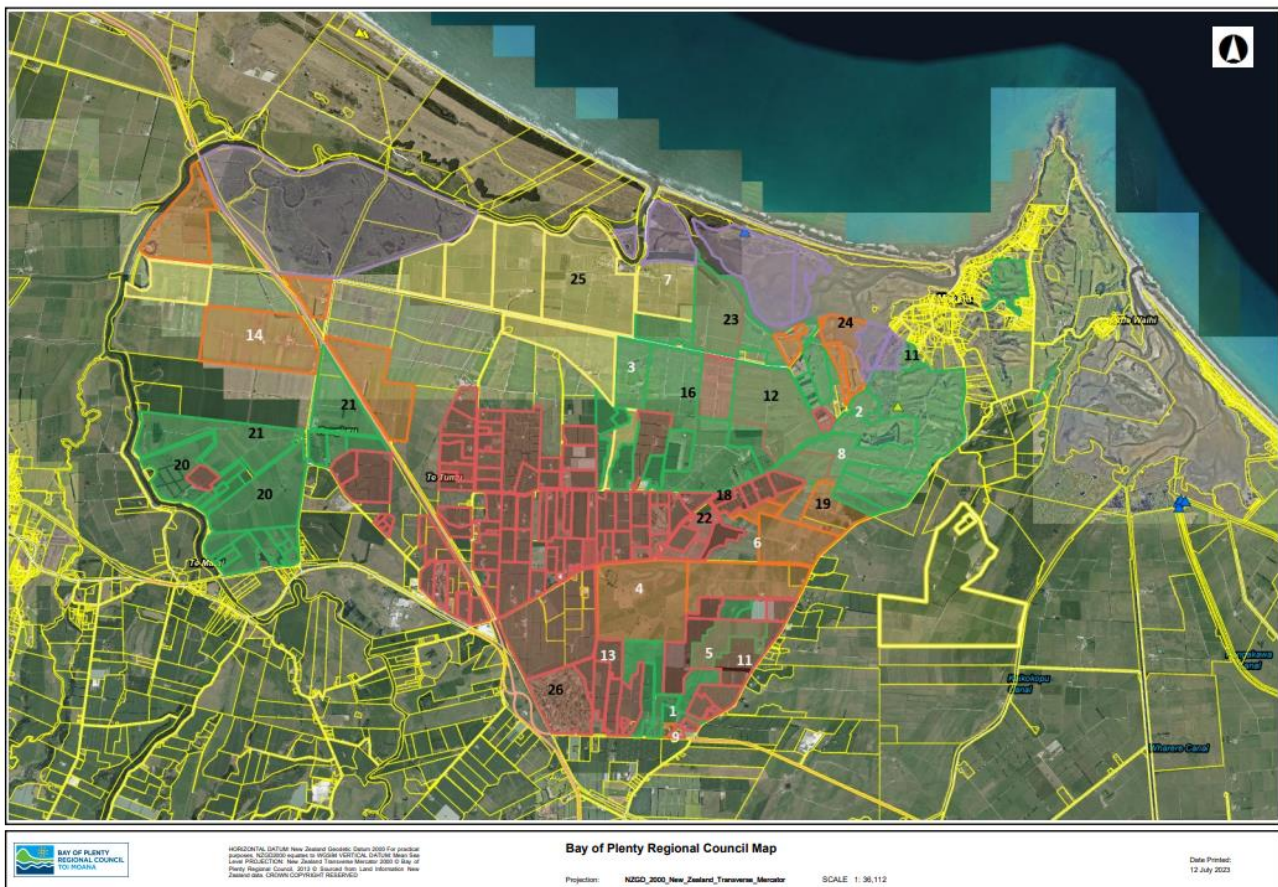
This shift is due to the conclusion of several years of concerted engagement efforts in the Focus Catchments, whereby all landowners have been contacted and offered support, with some choosing to adopt new sustainable management practices and complete land management works etc, but being a voluntary programme, the amount of new works possible was declining, therefore we are now providing an opportunity for others in the wider catchment to receive support from BOPRC. Support will also continue to be available for those within the Focus Catchment.

Some progress has been made during the 2023 year. New signed EPs and draft EPs in place (see map below).

Weather has restricted earthworks significantly this year, however the completion of the Te Arawa Lakes Trust treatment wetland is planned for summer 2023.

Planned Completion Date 30/06/2025

Example map of the engagement efforts to date, across the Ford Road/Waitepuia Focus Catchment area.





Photos taken in September 2022 from a thriving 3ha retirement planting of steep land in the Kokuaroa catchment on Summerhill Drive.

Project 4 – Focus Catchments

Output - 4B Action Plans for mid-lower Waiari Sub catchment

Project Leads – EJ Wentzel (WBOPDC) and Jennifer Pearson (TCC)

Progress Update

Te Ohu Parawai o te Waiari agreed to progress the Mauri model proposed by Dr Kepa Morgan. There is an opportunity to develop a Mauri model that spans both consents. The proposal has been signed off by Te Ohu Parawai o te Waiari and will be presented at the next Waiari Kaitiaki meeting which is due to occur in June.

Planned Completion Date: Yet to be confirmed

Project 5 – Farm Environmental Plans

Outputs - 5A Farm Environmental Plan template developed or adapted/5B Farm Environmental Plans progressed within the lower Kaituna Catchment

Project Lead – Jackson Efford (BOPRC)

Progress Update

- [Freshwater Farm Plan \(FW-FP\) regulations were gazetted on 8th June 2023](#) as a key part of the Essential Freshwater work programme to improve water quality and provide a nationally consistent farm planning framework.
- FW-FPs will be a mandatory and enforceable tool subject to Compliance, Monitoring and Enforcement functions by Councils under the RMA. They will require certification and audit.
- FW-FPs will need to consider the risks of the farming/growing operation on local water quality and identify practical time-bound actions on farm to help improve the health of water.
- As a minimum, BOPRC will need to support FW-FP implementation through:
 - Providing our best available information on Catchment Context, Challenges and Values to be considered in the FW-FP (already occurring as part of our Essential Freshwater Policy programme)
 - Working on the regional training and appointment of certifiers and auditors (with the support of a National Appointment Body, and
 - Fulfilling our Council compliance, monitoring and enforcement functions under the RMA.
- FW-FPs are likely to be phased in by the government in the Bay of Plenty Region around mid-2024 to 2025.

Planned Completion Date: 30/06/2025

Project 6 – Post Kaituna River Rediversion Enhancement

Output - 6A Restoration Work Programme Completed

Project Lead – Pim de Monchy (BOPRC)

Progress Update

The Kaituna River Re-diversion and Te Awa o Ngatoroirangi/Maketu Estuary Enhancement Project was implemented:

- To return at least 20% of the Kaituna River flows to Maketū (achieved 2021).
- To create at least 20 ha of new wetlands (achieved 2019).
- To maximise the ecological and cultural benefits (in progress since 2017).
- Inspections, annual cross section surveys and other monitoring are ongoing.

Work completed during the period May – July 2023:

- Restoration continues via the ongoing plant and animal pest control programmes at Otaiparia, Ford Island, Te Pā Ika and Papahikahawai. Please note image below showing the continued improvement in ecological condition of the restored saltmarsh and estuarine wetlands at Te Pā Ika; this area was poor dairy pasture with evidence of saline effects until 2019.



- Monitoring continues as required by resource consents.
- Agreements finalised with DOC and Fish and Game confirming that no new culvert into the Kaituna Wetland is required. These agreements are based on monitoring showing that the Kaituna Re-diversion has not lowered water levels in the wetland.
- Quarterly inspections have shown that erosion on the north bank of the inlet channel will require some remedial work with additional rock riprap required. Conversations with tangata whenua are underway and we hope to complete this work during spring or summer 2023/24.

- Submission of 2022 Annual Report on the project has been delayed by staff capacity and will be submitted by the end of July.
- Regional Council Senior Environmental Scientist Stephen Park has completed his memo analysing the results of ecological monitoring. Some of the 2022/23 data shows higher bacteria counts than predicted, and it is not yet known whether this is due to the re-diverted flows or the extremely wet season, or a combination of both. The conclusion in Stephen’s memo is reproduced here:

Overall monitoring results show changes in line with expected ecological benefits from the restoration of estuarine areas and increased river flow back into the estuary. Parts of the upper estuary have shown significant ecological improvements in terms of biodiversity and productivity which contributes significantly to the overall ecological health and integrity of the estuary. Water quality data also shows results consistent with predicted changes which may in the case of bacterial numbers, result in slightly higher numbers. No changes point to any unexpected adverse effects occurring as a result of the increased river flow and hence for ecological and water quality changes there are no concerns for maintaining the consented full river flow of 600,000 m³ per tidal cycle. Many of the potential ecological benefits of higher river flows into the estuary such as saltmarsh health, sediment, and net nutrient transports out of the estuary will occur more gradually over time.

Here is an excerpt from Stephen Park’s memo showing the results of monitoring E. coli bacteria in pipi and tuangi over time:

Results for tuangi are shown below in Figure 13 for winter sampling and Figure 14 for summer. The average winter results are all slightly higher following the increased river flows, although the 2022 winter sample results are similar to those of 2018. There is a similar result for summer with results tending to be higher after the increased river flows and the 2023 sample results lower than those for 2011. As with the results for the bacterial numbers in the overlying water, results have likely been influenced by rain events and a very wet 2022/23 summer.

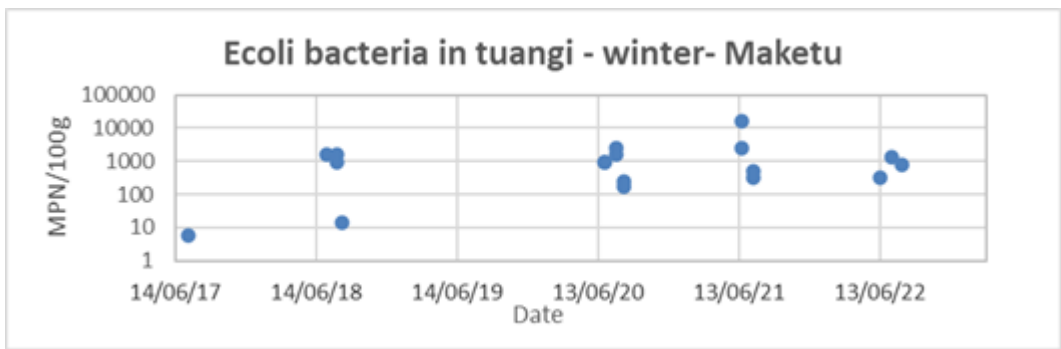


Figure 13, E. coli bacteria numbers in tuangi from lower Maketū Estuary over winter. River flows have been 150,000 m³ per tidal cycle up to 12 February 2020, then 400,000 m³ for the next year and then 600,000.

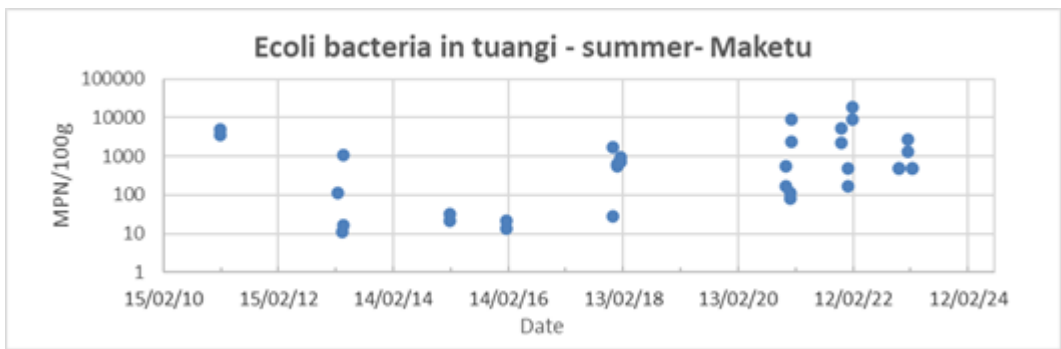


Figure 14, E. coli bacteria numbers in tuangi from lower Maketū Estuary over summer. River flows have been 150,000 m³ per tidal cycle up to 12 February 2020, then 400,000 m³ for the next year and then 600,000.

Results for E. coli bacteria numbers in pipi are shown in Figure 15 below for winter and Figure 16 for summer. Results for the winter and summer sampling show that E. coli numbers have been higher on average following the increase in river flow. As with the tuangi results, the summer 2023 pipi samples have lower E. coli numbers than those recorded in 2011. And the issue of rain affected sampling and a much wetter summer 2022/23 coinciding with the increased river flows, means that further sampling results under drier conditions will be needed to determine the change in bacteria numbers that has occurred.

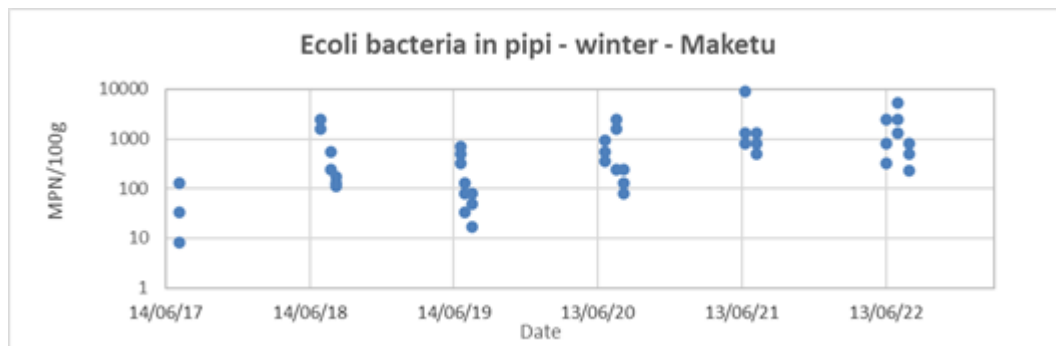


Figure 15, E. coli bacteria numbers in pipi from lower Maketū Estuary over winter. River flows have been 150,000 m³ per tidal cycle up to 12 February 2020, then 400,000 m³ for the next year and then 600,000.

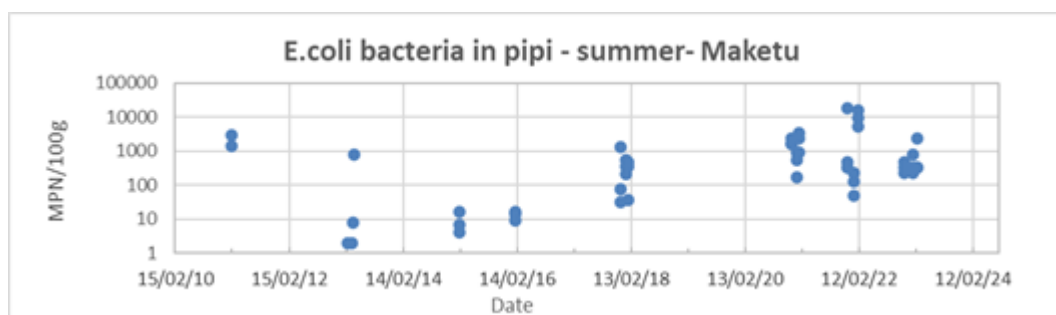


Figure 16, E. coli bacteria numbers in pipi from lower Maketū Estuary over summer. River flows have been 150,000 m³ per tidal cycle up to 12 February 2020, then 400,000 m³ for the next year and then 600,000.

The focus for future work includes:

- Discuss and plan for additional rock protection along parts of north bank of new diversion channel.
- Carry out investigation into whether gate closure to limit flows should be considered to limit suspended sediment discharges into the estuary from the Kaituna when in flood (this will involve assessing the trade-off between the negative effects of the suspended sediment against the benefits of allowing high flows to flush the estuary).
- Meet with tangata whenua collaboration group and the wider community in early September.
- Complete and submit 2023 Annual Report following meeting with tangata whenua and community.

Planned Completion Date: 2030 – although consents are held through until 2050 and the project will continue indefinitely.

Project 7 – Wetland Re-Creation

Outputs - 7A Te Pā Ika Wetland/7B Te Pourepo o Kaituna Wetland/7C Whakapou Korero Wetland/7D Wetland projects within existing EEF/Environmental Programmes

Project Lead – Courtney Bell (BOPRC)

Progress Update

Project 7A: Te Pā Ika Wetland

- Implementation of pest plant control and predator control programmes continues at Te Pa Ika wetland.
- Erosion along re-diversion channel at Fords Cut continues to be monitored and protection measures can be implemented if erosion worsens.
- Investigate potential construction of a bird viewing hide at Te Pa Ika.



Photoblique imagery captured 2022, looking east over Maketu estuary.

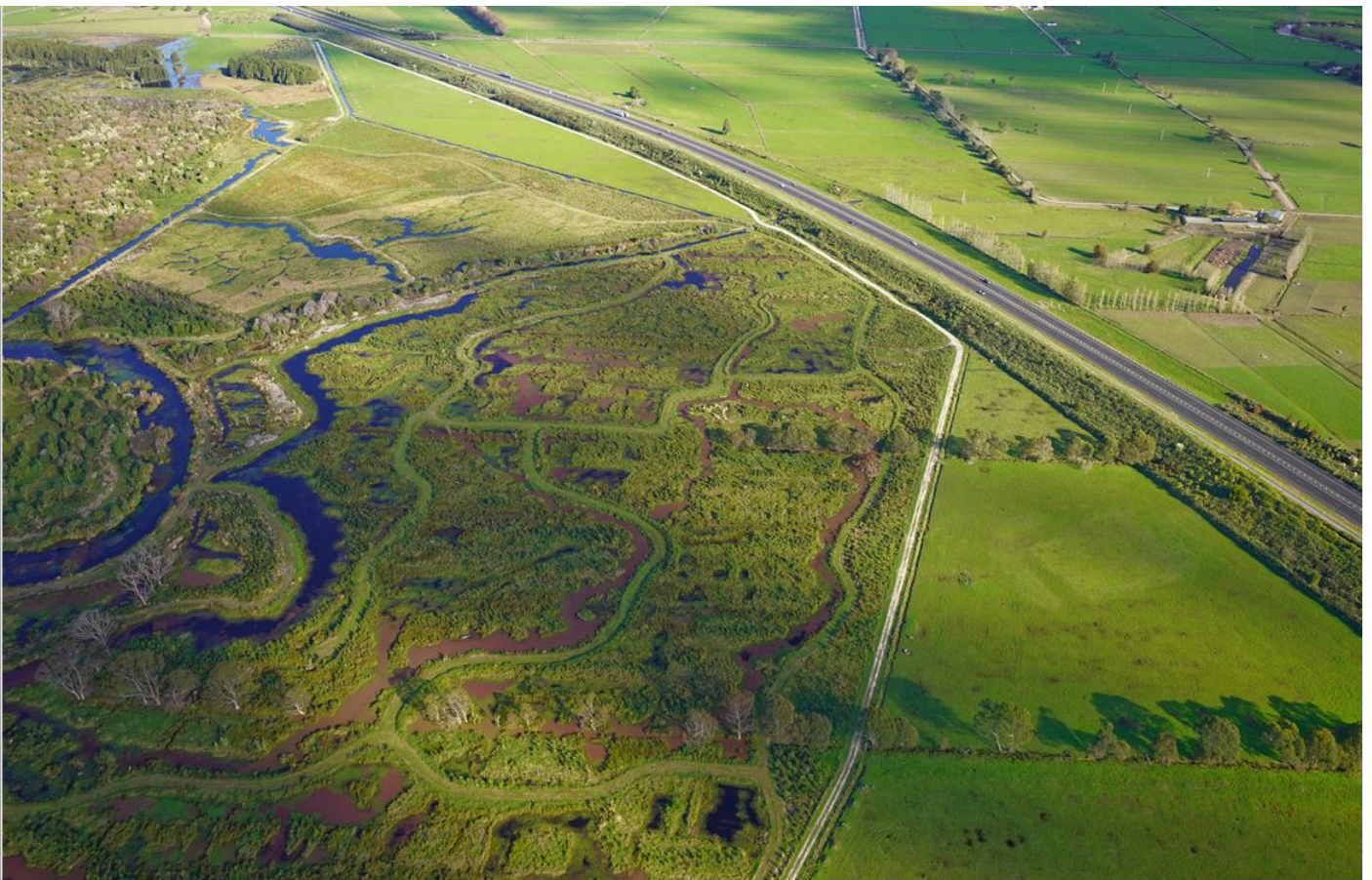


Drone image taken 18 October 2022, looking over Te Pa Ika and Kaituna River mouth/cut.

Planned Completion Date: 30/06/2024

Project 7B: Te Pourepo o Kaituna Project

- Maintenance contracts for plantings and pest plant control signed for the 2022/23 year.
- School planting and wetland education programme will continue in August and September 2023 for the fourth consecutive year. The programme is delivered in conjunction with Maketu Ongotoro Wetland Society. There are 440 students from nine local schools booked to participate in the programme.
- Main waterway reticulation channels cleared of invasive aquatic weeds in March 2023 to ensure desirable water levels and flows are maintained in existing and new areas of wetlands.
- Further wetland creation to continue in late 2023, converting another 6 ha of dairy land back into wetlands. This will complete the total area of wetland re-creation for Te Pourepo o Kaituna. Infill planting and maintenance will be ongoing, along with ecological monitoring.



Photoblique imagery taken during 2022 of te Pourepo o Kaituna Project and the Lower Kaituna Wildlife Management Reserve.

Planned Completion Date: 30/06/2025

Te Tini A Tuna – Quarterly reporting document

Project 7C: Whakapoukorero Wetland

- Environmental Programme (EP) currently in the process of being renewed to provide funding and guide restoration plans for the period 2022 to 2027.
- Te Arawa Lakes Trust and Te Runanga o Ngati Whakaue ki Maketu carrying out operational works with existing funding to continue restoration efforts while the new plan is being worked out and signed.



Photoblique of Whakapoukorero wetland taken during 2022.

Project 7D: Te Huauri o Te Kawa

Ongoing implementation of activities set out in an Environmental Programme (EP) being funded by Bay of Plenty Regional Council (BOPRC) and Western Bay of Plenty District Council (WBOPDC). Total funding of \$62,060.00 and \$10,545.00 provided by BOPRC and WBOPDC respectively, over a four-year period between 2019 and 2023. This is a Maketu Taiapure project, with Maketū Ōngātoro Wetland Society undertaking the operational works associated with the Environmental Programme (EP).



Photoblique image of Te Huauri o Te Kawa on the true right side of Kaituna River.

Outputs – 7E Lawrence Oliver Park Constructed Wetland

Project Lead – Jackson Efford (BOPRC)

Progress Update

A brand new publicly accessible wetland development and restoration is planned for Lawrence Oliver Park in Te Puke. This low-lying reserve owned by WBOPDC was previously leased for grazing but given its close proximity to town and the Te Ara Kahikatea Pathway tracks, the site has been flagged for restoration and enhancement including the construction of a biodiversity and treatment wetland. The project is only at the early scoping/design stages but will likely be delivered by a project team including BOPRC, WBOPDC, the Te Ara Kahikatea Pathway Society, and Tapuika Iwi. If things all go smoothly with design, consenting and procurement, then it may be possible to commence initial on the ground earth works in late summer 2023.

Most recently a stakeholder meeting was held on site to discuss the project (see the photos below), including representatives of Tapuika, Waitaha, Western Bay of Plenty District Council and the Pathway Society. Several other

wetlands were also visited on the day to help provide design inspiration. An engineer from the company Tektus has been engaged to complete the detailed wetland design on behalf of the partners.





Lawrence Oliver Park in Te Puke- the future location of a constructed wetland and biodiversity area alongside the Te Ara Kahikatea walkway.



Draft wetland design for Lawrence Oliver Park.

Planned Completion Date: 30/06/2024

Project 8 – Kaituna Habitats Network

Output - 8A Work Programme developed – Te Puke/Maketū Reserve Management Plan

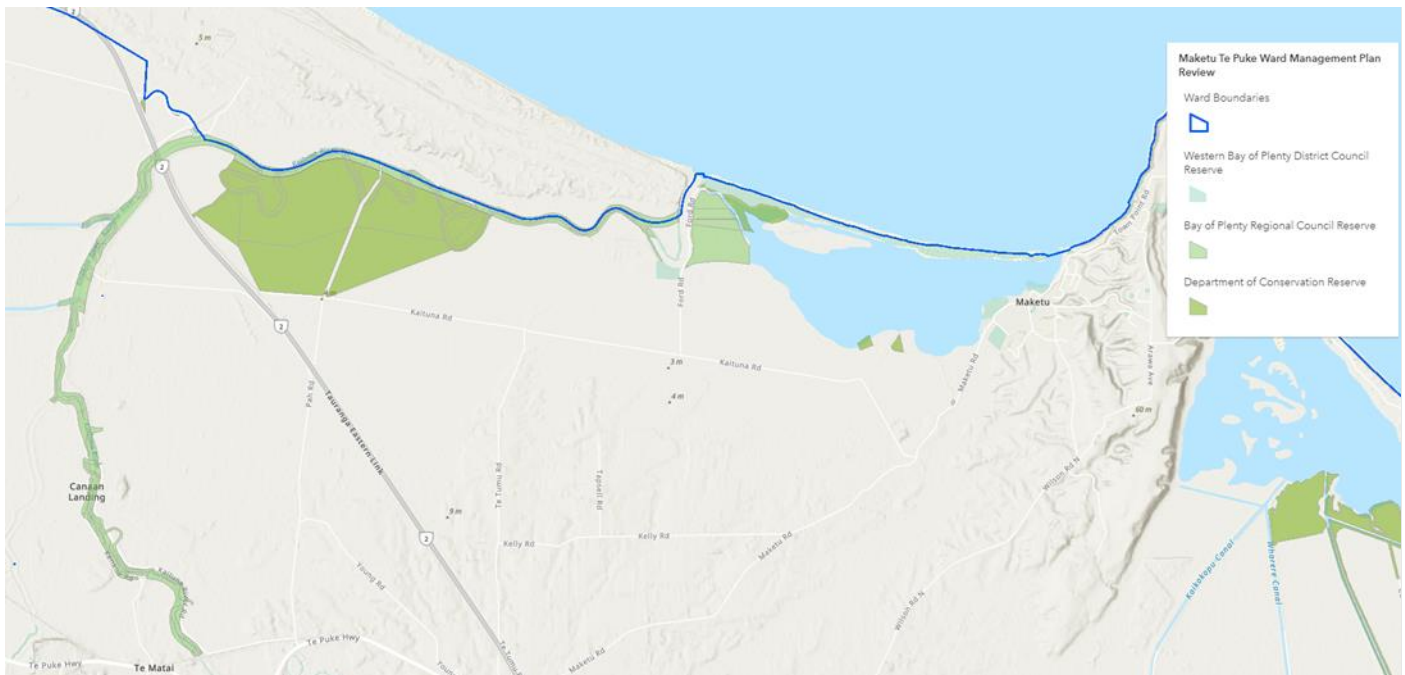
Project Lead – Jason Crummer (WBOPDC)

Progress Update

Project 8A is closed off now that the [Te Puke-Maketu RMP](#) has been adopted by Council. The decision story for the review of this RMP is available [HERE](#) and public maps can be viewed [HERE](#).

Formal consultation on the Te Puke-Maketu Reserve Management Plan is complete and the final plan adopted by Council on 14 June 2022.

As part of this review, a reserves map has been developed for the Te Puke-Maketu Ward with plans. This map is now available on Council's website and includes locations of reserves, public toilets, public playgrounds and picnic/BBQ areas. It also includes BOPRC Reserve and DOC Reserve information. This map can be further developed to include where specific wetlands are located, to better understand the Kaituna Habitats Network. Consideration will also be given to including Iwi owned land. A link to the map which is now publicly available is [here](#).



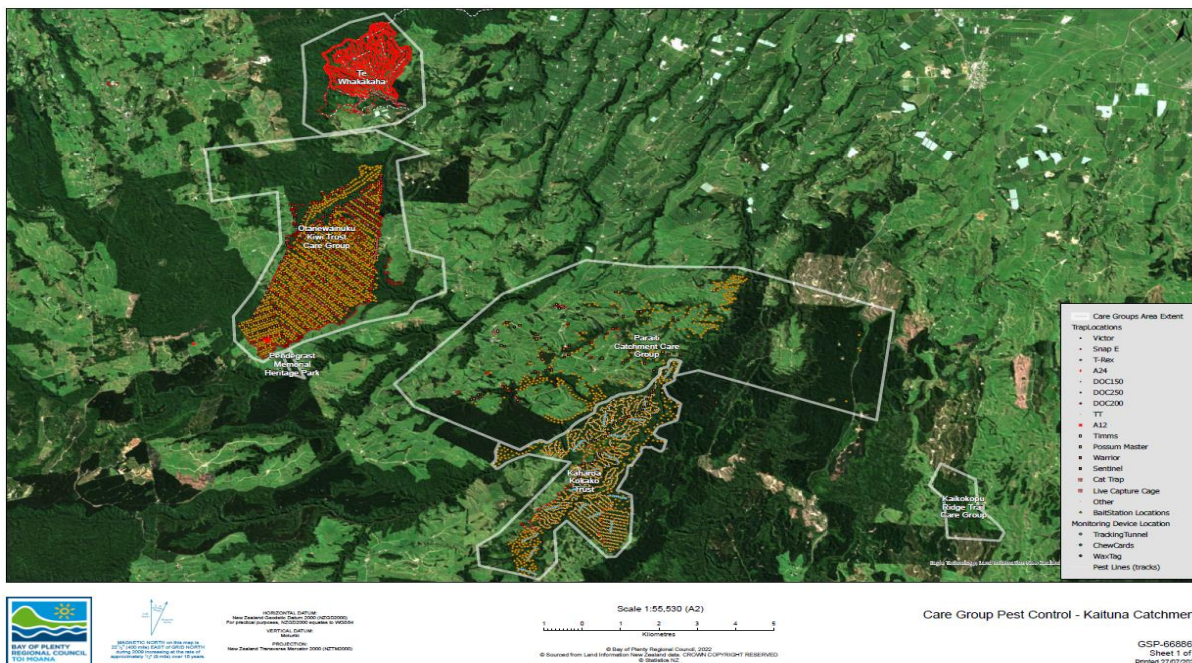
Project 8 – Kaituna Habitats Network

Outputs - 8A Work Programme developed (informed by Project 17)/8B At least one Habitat Network Connection Project complete

Project Lead – Courtney Bell (BOPRC)

Progress Update

- Kokako Ecosystem Expansion Programme. A collaboration to undertake ecosystem restoration by expanding and connecting Kōkako habitat from Kaharoa forest to other isolated Kōkako populations across the Bay of Plenty.
- Broad group of stakeholders invested including Tapuika Iwi Authority (TIA), Kaharoa Kokako Trust (KKT), Paraiti Catchment Care Group, Otanewainuku Kiwi Trust, Te Whakakaha care group, QE11, Department of Conservation and Nga Whenua Rahui are all involved.
- Te Wao Nui o Tapuika is a new taiao project that commences in December 2022. The project is based in the native ngahere at the top of Te Matai Road, with 6 new Tapuika staff coming on board to implement this project which is to be funded to June 2024. Special launch event to celebrate the commencement of this opportunity for Tapuika to be held mid-December. Te Matai Forest is a focus area for KEEP and Tapuika within the corridor.
- The Kete Taiao (GIS system) has been created by Bay of Plenty Regional Council and Cay Conservation Alliance, with 70 care groups within the BOP rohe currently using the system. The Kete Taiao is a new name given in November 2022, *basket, or kit symbolic as a 'holder of things' which is exactly what a database like this is – a metaphorical basket of information and knowledge for the environment and nature.*



Map of BOPRC dashboard showing current active care groups in the Kokako Ecosystem Expansion Programme (KEEP) rohe, showing all trap/bait station/monitoring tools.

Planned Completion Date: 2050



Project 10 – Kaituna Community Connection

Outputs - 10A Communications Strategy developed/10B TMoK Website Developed/10C Annual work plan released/10D At least one annual community event/10E River Symposium held

Project Lead – Chairman Flavell/Jane Waldon (TMoK)

Progress Update

10A Communications Strategy Developed – The website has now been completed with training to be provided in the New Year. The website forms a major part of the communications strategy., The communications strategy is being finalised as a final draft for approval by the committee.

Planned Completion Date: 28/02/2023

10B TMoK Website Developed - Work on a new website for Te Maru o Kaituna has been completed.

Planned Completion Date: 31/08/2022

10C Annual Work Plan Released - The secretariat work plan has been completed.

Planned Completion Date: 31/08/2022

10D At least one annual community event – No update provided.

Planned Completion Date: ?

10E River Symposium held - A river symposium was being planned for April 2023. A committee had been formed, and sponsorship had been requested and approved. However, the symposium had to be postponed due to the Chair of Te Maru o Kaituna's ill health. It is likely the Symposium will be deferred to either 2024 or 2025.

Planned Completion Date: 30/04/2025

Project 11 – Kaituna River Access

Outputs - 11A River Access Mapping Task Completed/11B – Feasibility Study Completed for Waka Launching Site

Project Lead – Jason Crummer (WBOPDC)

Progress Update

Project 11A – Formal consultation on the Te Puke-Maketu Reserve Management Plan is complete and the final plan adopted by Council on 14 June 2022.

This plan includes reserve specific information for Council owned reserves and outlines key information and approaches to the management of these, including community aspirations for each site and specifically recognises Te Tini a Tuna – Kaituna Action Plan 2019-2029.

Improved access to the Kaituna River has been reflected in the plan and especially under the reserve management approach for Bell Road Reserve, where Te Tini a Tuna and the investigation for the site to be used for a waka launching site is specially included.

Click on the link to view the Te Puke – Maketū Reserve Management Plan [Te Puke-Maketū RMP](#).

Project 11B – We are currently engaging consultants to carry out the Feasibility Study for Waka Launching sites. Quotes are due on Wednesday 19 July, and we intend on starting this study in August with estimated completion in November. Here is our brief for prospective providers:

Scope for feasibility study:

- Identify potential locations for waka launching into the Kaituna River, including around Waitangi township, and the feasibility of developing the necessary facilities (e.g., steps, jetties, ramps as necessary) and indicative costs.
- Mapping of current and historical river access points.
- Mapping community aspirations for river access (including type of access, e.g., swimming, food gathering, etc.).
- Support/Partner with Council through community and Tangata Whenua consultation and engagement.
- Archaeological & cultural assessments.
- Understanding of water flows and tidal patterns.
- Use information from the Bay of Plenty Regional Council, including the Rivers & Drainage team.

Planned completion date: Indicative timing for feasibility and implementation is 2022-2026.



Kaituna
Bell Road Reserve

| Reserve specific information | |
|------------------------------------|------------------------------------|
| Address/Location | Bell Road, Kaituna |
| Reserve Act Classification | Road reserve |
| Reserve Category (Primary Purpose) | Recreation and ecological linkages |
| District Plan Zone | Rural |
| Property ID | NA |
| Parcel ID | 136 |
| Site | NA |
| Current State | Informal carpark with jetty |
| Maintenance Levels of Service | None at this time |
| Inventory | Jetty, Seat, carpark |
| Utilities | None |
| Leases | None |

Background

- Informal carpark with jetty located at the end of Bell Road providing access to the Kaituna River.

Reserve Issues

- Limited open space at the site.
- Some feedback from the community that jetty facility could be improved and that the wooden structure may not last long term.

Reserve Management Approach

- Investigate potential for additional reserve facilities such as seating.
- Investigate opportunity to provide naming signage at reserve frontage.
- Continue to maintain reserve as small utilities and recreation area.
- Investigate designation of part of road reserve to recreation reserve.
- Continue to work with Te Maru o Kaituna River Authority to improve access to the Kaituna River and implement Te Tini a Tuna - Kaituna River Action Plan.
- Investigate opportunity for site to be used for waka launching site.
- District-wide reserve objectives and policies apply.

| 2021-2029 Long Term Plan | Indicative Costings (\$'000) | Indicative Timing |
|--------------------------------|------------------------------|-------------------|
| Bell Road Kaituna River Access | \$127,000 | 2021 - 2029 |

Ongoing maintenance will continue. See information above for agreed levels of service.

Project 12 – Kaituna Cycleway/Walkway

Outputs - 12A Strategy Completed/12B Strategy Implementation (TEL to Maketū Connection)

Project Lead – Scott Parker (WBOPDC)

Progress Update

The only change since the previous update, is that WBOPDC's application to the Tourism Infrastructure Fund (Round 6), for funding towards a cycleway along the stopbank between the TEL and Ford Road (Otaiapia Reserve) at Maketū, was declined. The project status is currently "amber" reflecting that funding is not yet allocated towards this project and therefore cannot be advanced for now. Implementation timing remains subject to funding prioritisation (zero funding is currently allocated) and all land access requirements resolved.

We understand that discussions by BOPRC with a private property owner, about cycleway route alignment along a short section of privately owned stopbank may have commenced and we look forward to an update about that if this is the case.

Staff have requested feedback from TMOk governance as to any expectations about timing or other aspects about this project – **none has yet been received.**

Planned Completion Date: Unknown at this stage

Project 13 – Kaituna Cultural and Historical Heritage

Outputs - 13A Interpretation Plan Completed/13B Interpretation Plan Implementation

Project Lead – Chairman Flavell/Jane Waldon (TMoK)

Progress Update

Planned Completion Date: Yet to be confirmed

Project 14 – Upper Catchment ‘Gateway’

Output - 14A Concept Plan Developed

Project Lead – Nick Chater (RLC)

Progress Update

The project has successfully received Funding from - Rotorua Energy Charitable Trust, Bay Trust, Project Crimson. In 2023 successful funding from Rotorua Trust (\$39K)

Projects completed to date:

- Removed 8ha of gorse alongside the Okere Awa/Kaituna River
- Planted 16,000 native trees
- Removed 163 goats
- 30 bait stations
- 70 DOC 200 and Trapinators in use
- Fenced 2,000 lm of riparian margin
- Planting and pest eradication programs with commercial zipline clients and planting projects with local schools and youth service providers.
- Ongoing pest plant eradication
- Wider community use of pest traps and access to funds through the Trust.
- Current poisoning program on Taheke land with BOPRC and Awa, potential for plants too.
- More land being made available for planting.



Ongoing work

- Clearing and re-baiting traps fortnightly (spring-summer) and monthly (autumn-winter).
- Relocating traps to keep them productive and in working order.
- Roll out toxin control as required.
- Conduct ongoing monitoring (trap catch data, bird counts and photo points).
- Provide evidence that traps and bait are being used following best practice.

Our members (volunteers)

Each month we collectively volunteer more than 120 hours to various projects around Okere Falls.

Volunteers: Stu Luke, Sam Sutton, Neil Sutton, Carol Goodman, Sarah Uhl, Rotorua Ziplines and Rotorua Rafting staff.



Group aspirations - Our Goal is to restore the Mauri to the

Okere Awa in conjunction with Te Maru O Kaituna.

Reason for Rotorua Trust 2023 application: There are a range of historical and current pressures that have degraded the natural environment around Okere Falls. These include deforestation, pest plants, pest animals and pollution of waterways. The next steps for the Te Mauri o Okere Awa Charitable Trust was to increase the area that we removing invasive pest species and planting.

The opportunity we want to address is the restoration and protection of the local ecosystems, so we have more native species and less pest species. We also want to provide opportunities for community members to get involved in conservation activities and begin pest control on their own land around lakefront areas.



- Riparian weed removal
- Riparian native planting on the awa 12 ha
- Riparian Fencing 2000lm
- Pest fauna eradication in the immediate Okere catchment including Okere 1B3C, 500ha
- Pest Eradication to less than 1% on the shores of Lake Rotoiti.
- Install stormwater drain sleeves on all drains/creeks into the catchment



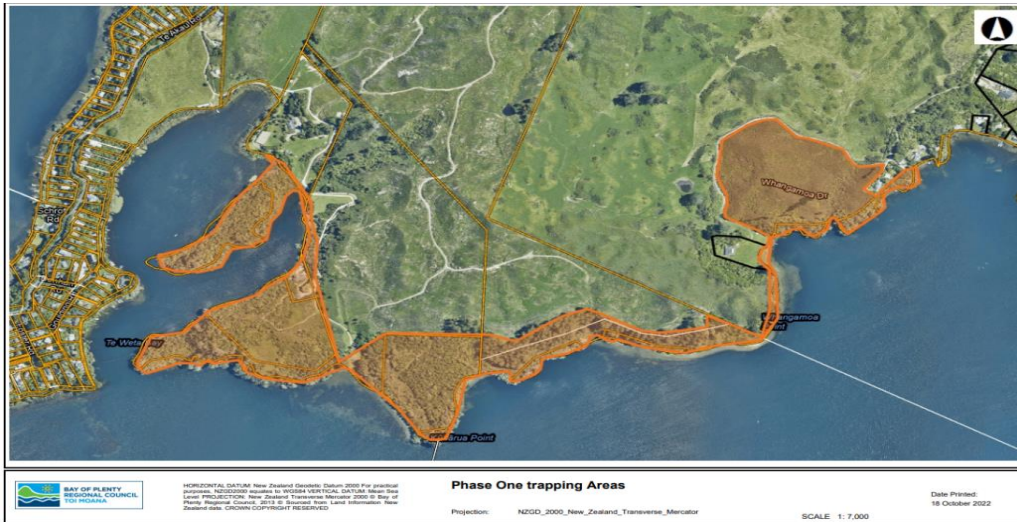
Outcome monitoring

- Trapping catch data will be monitored closely to determine if any changes need to be made to continue to catch predators.
- Trapping data will be recorded on the Bay of Plenty Regional Council Care Group App.
- 6 monthly bird counts will be carried out.
- 6 monthly photo points will be conducted to follow progress.
- 5-minute bird counts (see attached bird count recently completed)
- pest trapping data
- Plots that track the success of seedling planting, supported by visual monitoring to inform pest
- Control action required to maintain benefits
- TrapNZ used to log traps and monitor effectiveness

Work Plan (future aspirations)

With much of the reforestation and pest trapping work around the top part of the Okere/Kaituna awa, our future aspirations are to move these projects out into the wider Okere Falls area and work with a range of organisations and motivated locals to achieve our key goals. Some work has already started as we start to remove pest species (animal and plant) and plant native plant species.

Proposed area for future key projects (below map)



2023 – 2024 Rotorua Trust Funding - What we have been funded for: Establishment of new trap lines and forest restoration area in Te Weta Bay, Okere Falls - this will be the start of a trapline from Okere Falls to Otaramarae.

- Further purchase of traps including, 15x automatic traps and lure (\$8K)
- Fence repair materials (\$100)

Quarterly community planting days in established conservation areas (aka active pest management established)

- Tree seedlings for planting events (\$30k).
- Light refreshments and kai for quarterly planting days
- Signage for conservation areas

This work needs to be completed in one year.

The aim is to establishment of trapline by volunteers, early 2023. Established by Stu Luke, Charlotte Wood, Pipi Uhl and Sam Sutton with landowner and Rotoiti scenic reserve board support.

Continual maintenance of trap line - ongoing - volunteer led.

The local community, as well as visitors to Okere Falls and lake Rotoiti, will benefit from the conservation work and enhanced environment. Benefits include less pest species, more native species, and remediation of our waterways. The opportunity to come together as a community and connect with nature through planting days and pest control also provides benefits for wellbeing.

Acknowledge that there are other groups doing conservation work in the area and it's all supporting the overall restoration (we communicate with each other):

Forest and Bird is doing pest eradication (possum/rat) around Otaramarae/Lake Rotoiti to stop the damage to the Pohutukawa along the lake edge. An Ōkere Falls Care Group has been set up and they have been doing pest eradication and planting in and around their community and local reserves in the Te Akau Peninsular.

Planned Completion Date: Unknown at this stage

Project 16 – State of the Awa Integrated Monitoring and Reporting

Output - 16A Integrated Monitoring Plan Developed/16B Implementation of Integrated Monitoring Plan

Project Lead – Gina Mohi (BOPRC)

Progress Update

Planned Completion Date: 2023-2025

Project 17 – Kaituna Catchment Network Mapping

Output - 17A Completed Stocktake and Collation of Available Information BOPRC most aspects, WBOPDC River Access and Cycleway Component

Project Leads – Georgia Edwards (BOPRC), Jason Crummer (WBOPDC)

Output - 17B – Completed Feasibility Study for Project 7

Project Lead – Georgia Edwards (BOPRC)

Output - 17C Completed Feasibility Study for Project 8 – BOPRC most aspects, WBOPDC River Access and Cycleway Component

Project Leads – Georgia Edwards (BOPRC), Jason Crummer (WBOPDC)

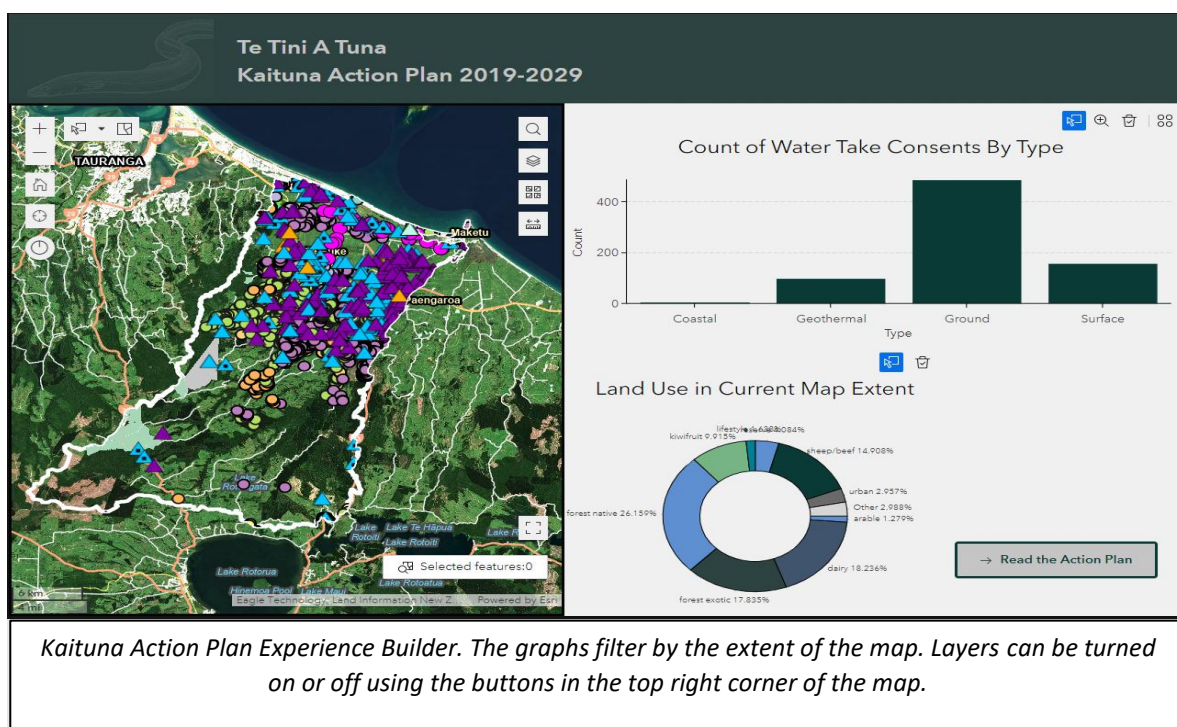
Progress Update

17A (Georgia Edwards, BOPRC) - Map with relevant layers and graphs is still available in our ArcGIS Online environment and ready to share for feedback with anyone interested in reviewing the tool. Next steps for 17 A/B/C remain consistent with previous quarter. Further guidance on how this tool is going to be used and the audience for this tool is required to guide any further updates and how widely the link to the tool should be shared.

17B (Georgia Edwards, BOPRC) - Previous reporting stated that data for this project is mostly available. These datasets have been included in the web map/experience builder project mentioned above. Project 7 remains a focus for my discussions with land management officers.

17C (Georgia Edwards, BOPRC) - Datasets I currently have that are relevant to this project are included in the web map/experience builder. Project 8 remains a focus for my discussions with land management officers.

Planned Completion Date: 2023





**KAITUNA
HE
TAONGA
TUKU
IHO** A TREASURE
HANDED DOWN



Te Maru
o Kaituna